



**QUOZ**  
**2014-15**  
Promotional  
Products  
Directory

[quoz.com.au](http://quoz.com.au)



### **Local Stock**

Stock is available in our warehouse.



### **Offshore Stock**

Samples are available. Offshore stock is to be reserved upon receipt of order.



### **Indent**

Samples are available. Products are custom made for your orders.



### **Sourcing**

We will source products to meet your request, but no samples available.

# CONTENTS



## APPAREL & ACCESSORIES

PG3-28

- ▶ T-SHIRTS
- ▶ SHIRTS
- ▶ WORKWEAR
- ▶ POLOS
- ▶ SHORTS
- ▶ APRONS
- ▶ SINGLETS
- ▶ BOARDIES
- ▶ BIBS
- ▶ SWEATSHIRTS
- ▶ SWIMWEAR
- ▶ SCARVES



## HEADWEAR

PG29-31

- ▶ CAPS
- ▶ SWIM CAPS
- ▶ HATS
- ▶ BEANIES
- ▶ VISORS



## BAGS, POUCHES & TOTES

PG32-48

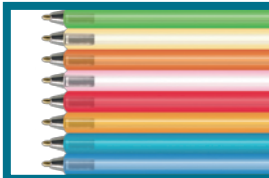
- ▶ BAGS
- ▶ BRIEFCASES
- ▶ POUCHES
- ▶ COOLER & LUNCH BAGS
- ▶ BACKPACKS
- ▶ TOTES
- ▶ UTILITY BAGS
- ▶ DUFFELS
- ▶ LUGGAGE



## DRINKWARE

PG49-69

- ▶ MUGS
- ▶ GLASSWARE
- ▶ BAR ACCESSORIES
- ▶ BOTTLES
- ▶ TUMBLERS
- ▶ DISPOSABLE CUPS
- ▶ COOLERS



## WRITING INSTRUMENT

PG70-78

- ▶ PLASTIC PENS
- ▶ METAL PENS
- ▶ ECO-PENS
- ▶ NOVELTY PENS



## OFFICE & BUSINESS

PG79-90

- ▶ CALCULATORS
- ▶ NOTEBOOKS & PADS
- ▶ FRAMES & HOLDERS
- ▶ OFFICE ACCESSORIES
- ▶ TAGS & BADGE HOLDERS
- ▶ PORTFOLIOS



## IT, MOBILE & ELECTRONICS

PG91-102

- ▶ MOBILE ACCESSORIES
- ▶ COMPUTER ACCESSORIES
- ▶ SPEAKERS
- ▶ MOBILE COVERS & HOLDERS
- ▶ USB HUBS
- ▶ HEADPHONES & EARPHONES
- ▶ STYLUSES
- ▶ CHARGES

# CONTENTS



## TOOLS & AUTO

PG103-121

- ▶ TAPE MEASURES
- ▶ TORCHES/FLASHLIGHTS
- ▶ KEYRINGS
- ▶ AUTO ACCESSORIES & ORGANIZERS
- ▶ SAFETY ITEMS
- ▶ TOOLS



## HOMEWARES

PG122-136

- ▶ KITCHEN ACCESSORIES
- ▶ PET ACCESSORIES
- ▶ CLIPS
- ▶ HOUSEHOLD ITEMS
- ▶ FOOD STORAGE



## OUTDOOR & TRAVEL

PG137-144

- ▶ UMBRELLAS
- ▶ CHAIRS, SEATS & MATS
- ▶ TRAVEL ACCESSORIES
- ▶ BBQ



## HEALTHCARE & PERSONAL CARE PG145-155

- ▶ HEALTHCARE ITEMS
- ▶ PEDOMETERS & TIMERS
- ▶ PERSONAL ITEMS
- ▶ SUNGLASSES
- ▶ SLIPPERS & THONGS
- ▶ WATCHES
- ▶ COSMETIC ACCESSORIES



## TOWELS & BLANKETS

PG156-166

- ▶ BEACH TOWELS
- ▶ GOLF TOWELS
- ▶ SPORT & HAND TOWELS
- ▶ ROBES
- ▶ BLANKETS & THROWS



## AWARDS & TROPHIES

PG167-169

- ▶ GLASS
- ▶ OPTICAL
- ▶ DICHOIC
- ▶ PLAQUES
- ▶ GIFTWARE



## NOVELTIES & TOYS

PG170-176

- ▶ WRISTBANDS
- ▶ STRESS TOYS
- ▶ RECREATION TOYS
- ▶ NOVELTY ITEMS



# APPAREL & ACCESSORIES



## PRIZE POLO

CODE: P-18



165gsm 100% polyester mini mesh Micro-Dry™

Size: S-3XL, 5XL



WHITE

BLACK

RED 200



NAVY 296

ROYAL 2945

ALUMINIUM 427

## PRIZE LADY POLO

CODE: P-W18



165gsm 100% polyester mini mesh Micro-Dry™

Size: 8-18, 22



WHITE

BLACK

RED 200



NAVY 296

ROYAL 2945

ALUMINIUM 427

## AERO POLO

CODE: P-15



180gsm 60% cotton 40% polyester fine pique Micro-Dry™

Size: S-3XL, 5XL



WHITE

BLACK

RED 200

NAVY 296



PURPLE 2735

CYAN

KELLY GREEN 354

## AERO LADY POLO

CODE: P-W15



180gsm 60% cotton 40% polyester fine pique Micro-Dry™

Size: 8-18, 22



WHITE

BLACK

RED 200

HOT PINK 205



NAVY 296

PURPLE 2735

CYAN

KELLY GREEN 354

## FOCUS POLO

CODE: P-16



165gsm 100% polyester waffle  
Micro-Dry™

Size: S-3XL, 5XL



WHITE/NAVY ROYAL/WHITE RED/WHITE NAVY/WHITE BLACK/WHITE

## FOCUS LADY POLO

CODE: P-W16



165gsm 100% polyester waffle  
Micro-Dry™

Size: 8-18, 22



WHITE/NAVY ROYAL/WHITE RED/WHITE NAVY/WHITE BLACK/WHITE

## EXCEL POLO

CODE: P-12



165gsm 100% polyester mini waffle  
Micro-Dry™

Size: S-3XL, 5XL



WHITE/NAVY ROYAL/WHITE NAVY/WHITE BLACK/WHITE ALUMINIUM/BLACK

## EXCEL LADY POLO

CODE: P-W12



165gsm 100% polyester mini waffle  
Micro-Dry™

Size: 8-18, 22



WHITE/NAVY ROYAL/WHITE NAVY/WHITE BLACK/WHITE ALUMINIUM/BLACK

## EXCEL JUNIOR POLO

CODE: P-K12



165gsm 100% polyester mini waffle  
Micro-Dry™

Size: 4-14



WHITE/NAVY ROYAL/WHITE NAVY/WHITE BLACK/WHITE ALUMINIUM/BLACK

## VICTORY POLO

CODE: P-13



165gsm 100% polyester mini waffle  
Micro-Dry™

Size: S-3XL, 5XL



ROYAL/WHITE NAVY/WHITE BLACK/WHITE ALUMINIUM/BLACK

## VICTORY LADY POLO

CODE: P-W13



165gsm 100% polyester mini waffle  
Micro-Dry™

Size: 8-18, 22



ROYAL/WHITE NAVY/WHITE BLACK/WHITE ALUMINIUM/BLACK

## DEFENDER POLO

CODE: P-11



165gsm 100% polyester mini pique  
Micro-Dry™

Size: S-3XL, 5XL



WHITE/NAVY WHITE/RED SKY/NAVY ROYAL/WHITE ROYAL/GOLD



NAVY/WHITE NAVY/GOLD BOTTLE/GOLD BLACK/WHITE BLACK/GOLD



## DEFENDER LADY POLO

CODE: P-W11



165gsm 100% polyester mini pique  
Micro-Dry™

Size: 8-18



WHITE/NAVY    WHITE/RED    SKY/NAVY    ROYAL/WHITE    ROYAL/GOLD



NAVY/WHITE    NAVY/GOLD    BOTTLE/GOLD    BLACK/WHITE    BLACK/GOLD

## FIDELITY POLO

CODE: P-01



220gsm 65% polyester 35%  
cotton pique

Size: S-3XL, 5XL



WHITE    BLACK    GOLD 136    RED 200



SKY 292    ROYAL 2945    NAVY 296    BOTTLE 3308

## ETERNITY POLO

CODE: P-W01



220gsm 65% polyester 35%  
cotton pique

Size: 8-18, 22



WHITE    BLACK    GOLD 136    RED 200



SKY 292    ROYAL 2945    NAVY 296

## JUNIOR POLO

CODE: P-K01



220gsm 65% polyester 35%  
cotton pique

Size: 4-14



WHITE    BLACK    GOLD 136    RED 200



SKY 292    ROYAL 2945    NAVY 296    BOTTLE 3308

## DIVISION POLO

CODE: P-02



210gsm 100% cotton

Size: S-3XL



WHITE

BLACK

RED 200

ROYAL 287

NAVY 296

## DESTINY POLO

CODE: P-W02



210gsm 95% combed cotton  
5% spandes jersey

Size: 8-16



WHITE

BLACK

RED 200

NAVY 296

## SELECT POLO

CODE: P-03



190gsm 65% polyester  
35% cotton pique

Size: XS-3XL



WHITE

BLACK

NAVY 296

## POWER POLO

CODE: P-04



200gsm 65% polyesyter  
35% cotton pique

Size: S-3XL, 5XL



WHITE/NAVY

NAVY/WHITE

BLACK/WHITE

ROYAL/GOLD

D.GREY MARLE/NAVY

## SLIM POLO

CODE: P-10



220gsm 100% combed cotton pique

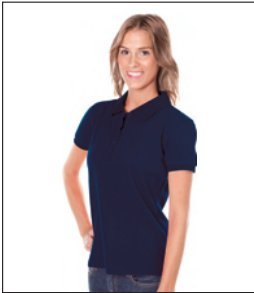
Size: S-3XL



WHITE      BLACK      NAVY 296      D. Grey Marble 422

## SLIM LADY POLO

CODE: P-W10



220gsm 95% cotton 5% spandex pique

Size: 8-18, 22



WHITE      BLACK      NAVY 296

## PRIZE TEE

CODE: T-18



165gsm 100% polyester mini mesh  
Micro-Dry™

Size: S-3XL, 5XL



WHITE      BLACK      NAVY 296  
RED 200      ROYAL 287      ALUMINIUM 427

## PRIZE LADY TEE

CODE: T-W18



165gsm 100% polyester mini mesh  
Micro-Dry™

Size: 8-18, 22



WHITE      BLACK      NAVY 296  
RED 200      ROYAL 287      ALUMINIUM 427

## PRIZE JUNIOR TEE

CODE: T-K18



165gsm 100% polyester mini mesh  
Micro-Dry™

Size: 4-14



WHITE

BLACK

NAVY 296



RED 200

ROYAL 287

ALUMINIUM 427

## BASE TEE

CODE: T-23



185gsm semi-combed cotton jersey

Size: S-3XL



WHITE

BLACK

NAVY



RED

ROYAL

YELLOW

D.GREY MARLE

## WAVE TEE

CODE: T-24



200gsm 100% ring spun combed  
cotton jersey

Size: S-3XL



WHITE

BLACK

RED

D.GREY MARLE



ROYAL

CYAN

KELLY GREEN

## ELLE TEE

CODE: T-W22



160gsm 100% ring spun combed  
cotton jersey

Size: S/8-2XL/16



WHITE

BLACK

CYAN

RED



D.GREY MARLE

ROYAL

KELLY GREEN

# APPAREL & ACCESSORIES

**PREMIERE TEE**  
CODE: T-03



190gsm 100% semi-combed cotton jersey

Size: XS-3XL, 5XL



**JUNIOR TEE**  
CODE: T-K03



190gsm 100% semi-combed cotton jersey

Size: 0-14



**BELLA TEE**  
CODE: T-W03



190gsm 100% semi-combed cotton jersey

Size: 6-18



**NOTES:**

- \* Colours available for T-03. (Only White, Black, Navy, Royal, Red, Charcoal, Chocolate, Khaki, Lime, Lemon, D.Grey, Gold, Fluoro Yellow available in size 5XL)
- \*\* Colours available for T-W03. (Only White, Black, Navy, Royal, Red, D.Grey Marle, Lime, Hot Pink, Pale Pink, Cyan, Emerald, Purple, Charcoal, Fluoro Yellow available in size 18)
- \*\* Colours available for T-K03. (Only White, Navy, Royal, Red, Sky, Pale Pink, Hot Pink & Lemon available in size 0 & 1)

## SLIM TEE

CODE: T-01



210gsm 100% combed cotton jersey

Size: S-3XL



## TREND TEE

CODE: T-11



150gsm 100% full combed cotton jersey

Size: S-3XL



## TREND LADY TEE

CODE: T-W11



150gsm 100% full combed cotton jersey

Size: 8-18



## SELECT TEE

CODE: T-V08



190gsm 100% semi-combed cotton jersey

Size: S-3XL



## INSPIRE TEE

CODE: T-VW04



200gsm 95% combed cotton 5% spandex jersey

Size: 8-18



WHITE



BLACK



HOT PINK 205



POWDER BLUE 277



NAVY 296



RED 200

## EDGE TEE

CODE: T-07



180gsm 100% cotton jersey garment washed

Size: S-3XL



WHITE



BLACK

## ACTIVE TEE

CODE: T-05



190gsm 100% semi-combed cotton jersey

Size: S-3XL



WHITE/ROYAL



WHITE/RED



WHITE/NAVY



D.GREY MARLE/NAVY

## JASPER TEE

CODE: T-W06



160gsm 60% combed cotton 40% viscose jersey

Size: 8-14



WHITE



BLACK

## DAISY TEE

CODE: T-G03



190gsm 100% semi-combed cotton jersey

Size: 4-14



WHITE      SORBET 600      FUZZY PINK 211      LILAC 264

## FIGURE 3/4 TEE

CODE: T-QW09



200gsm 95% combed cotton 5% spandex jersey

Size: 8-18



WHITE      BLACK      RED 200

## DESTINY TEE

CODE: T-W05



200gsm 95% combed cotton 5% spandex jersey

Size: 8-18

\* Only White, Black, Navy available in size 18



BLACK\*      CORAL RED 186      WHITE\*



RED 200      HOT PINK 205      NAVY 296\*      ARMY GREEN 5743

## VOGUE TEE

CODE: T-W10



200gsm 95% combed cotton 5% spandex jersey

Size: 8-18



WHITE      BLACK



## REFLECT L/S TEE

CODE: T-L01



200gsm 100% combed cotton jersey

Size: S-3XL



WHITE



BLACK



RED 200



ROYAL 287



NAVY 296



CHARCOAL 432

## EMPIRE L/S TEE

CODE: T-LW01



200gsm 100% combed cotton jersey

Size: 8-16



WHITE



BLACK



RED 200



NAVY 296



CHARCOAL 432

## PATRIOT L/S TEE

CODE: T-LK03



190gsm 100% semi-combed cotton jersey

Size: 4-14



WHITE



BLACK



RED 200



ROYAL 287



NAVY 296



GOLD 136



LIME 376

## WRATH MUSCLE TOP

CODE: S-01



190gsm 100% semi-combed cotton jersey

Size: S-2XL



WHITE



BLACK

## PRIZE SINGLET

CODE: S-18



165sm 100% polyester mini mesh  
Micro-Dry™

Size: S-3XL, 5XL



## PRIZE LADY SINGLET

CODE: S-W18



165sm 100% polyester mini mesh  
Micro-Dry™

Size: 8-18



## ROYALE SINGLET

CODE: S-03



190gsm 100% semi-combed  
cotton jersey

Size: S-3XL



## SPICE SINGLET

CODE: S-W01



200gsm 95% combed cotton 5%  
spandex jersey

Size: 8-16



## RESPONSE TOP

CODE: S-W04



200gsm 95% rayon 5% spandex jersey

Size: 8-16



WHITE      BLACK      CORAL RED 186      SORBET 600

## LULU TANK

CODE: S-W08



200gsm 95% combed cotton 5% spandex jersey

Size: 8-16



WHITE      BLACK      FUZZY PINK 211      LILAC 264      CREAMY LIME 358

## SWIFT SINGLET

CODE: S-W09



200gsm 95% combed cotton 5% spandex jersey

Size: 8-16



WHITE      BLACK      PALE PINK 2365      PURPLE 2735

## STEP TOP

CODE: S-W03



230gsm 95% cotton 5% spandex

Size: 8-14



WHITE/BLACK      BLACK/WHITE

## STEP SHORTS

CODE: ST-W04



230gsm 95% combed cotton  
5% spandex

Size: 8-14



BLACK



NAVY 296



D.GREY MARLE 422

## SPRINT SHORTS

CODE: ST-03



165gsm 100% polyester mini mesh  
Micro-Dry™

Size: S-3XL



BLACK



NAVY 296

## SPRINT LADY SHORTS

CODE: ST-W03



165gsm 100% polyester mini mesh  
Micro-Dry™

Size: 8/10, 12/14, 16/18



BLACK



NAVY 296

## SPRINT JUNIOR SHORTS

CODE: ST-K03



165gsm 100% polyester mini mesh  
Micro-Dry™

Size: 4/6, 8/10, 12/14



BLACK



NAVY 296

**PIPELINE BOARDIE**

CODE: ST-B01



100% polyester microfibre

Size: S-2XL



**ALOHA BOARDIE**

CODE: ST-BW01



100% polyester microfibre

Size: 8-16



**HYBRID RASHIE**

CODE: SWM-R01



220gsm 82% nylon 18% spandex

Size: S-3XL



**RESIST RASHIE**

CODE: SWM-RK01



220gsm 82% nylon 18% spandex

Size: 4-14



## CAREER L/S SHIRT

CODE: SHT-L09



55% polyester 45% cotton

Size: S-3XL, 5XL



BLACK



BLUE

## CAREER LADY L/S SHIRT

CODE: SHT-LW09



55% polyester 45% cotton

Size: 8-18, 22



BLACK



BLUE

## CHAMBRAY L/S SHIRT

CODE: SHT-L05



100% cotton

Size: S-3XL, 5XL



CHAMBRAY BLUE

## CHAMBRAY S/S SHIRT

CODE: SHT-06



100% cotton

Size: S-3XL, 5XL



CHAMBRAY BLUE

**CHAMBRAY LADY L/S SHIRT**

CODE: SHT-LW05



100% cotton

Size: 8-18, 22



CHAMBRAY BLUE

**CHAMBRAY LADY S/S SHIRT**

CODE: SHT-W06



100% cotton

Size: 8-18, 22



CHAMBRAY BLUE

**ESSENTIAL L/S SHIRT**

CODE: SHT-L01



65% polyester 35% cotton

Size: XS-3XL, 5XL



WHITE

BLACK

RED

CHARCOAL



SKY

ROYAL

SAND

**ESSENTIAL S/S SHIRT**

CODE: SHT-02



65% polyester 35% cotton

Size: XS-3XL, 5XL



WHITE

BLACK

RED

CHARCOAL



SKY

ROYAL

SAND

## COMPOSURE 3/4 SHIRT

CODE: SHT-QW01



60% cotton 35% polyester  
5% spandex

Size: 8-20, 22



WHITE

BLACK

RED

CHARCOAL



SKY

ROYAL

SAND

## COMPOSURE S/S SHIRT

CODE: SHT-W02



60% cotton 35% polyester  
5% spandex

Size: 8-20, 22



WHITE

BLACK

RED

CHARCOAL



SKY

ROYAL

SAND

## LANCE L/S SHIRT

CODE: SHT-L03



65% polyester 35% cotton

Size: XS-2XL



WHITE

BLACK

RED

CHARCOAL

## LANCE S/S SHIRT

CODE: SHT-04



65% polyester 35% cotton

Size: XS-2XL



WHITE

BLACK

RED

CHARCOAL



**INNOVATIVE 3/4 SHIRT**

CODE: SHT-QW03



60% cotton 35% polyester  
5% spandex

Size: 8-16



WHITE BLACK RED SAND

**INNOVATIVE S/S SHIRT**

CODE: SHT-W04



60% cotton 35% polyester  
5% spandex

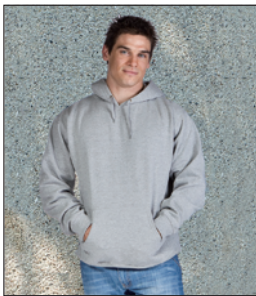
Size: 8-16



WHITE BLACK RED SAND

**THERMO HOODIE**

CODE: SWT-H01



320gsm 80% cotton 20%  
polyester fleece

Size: S-3XL



WHITE BLACK RED 200 ROYAL 287 NAVY 296 ARMY GREEN 5743 D.GREY MARLE 422

**THERMO LADY HOODIE**

CODE: SWT-HW01



320gsm 80% cotton 20%  
polyester fleece

Size: 8-16



BLACK RED 200 PALE PINK 2365 D.GREY MARLE 422

## THERMO JUNIOR HOODIE

CODE: SWT-HK01



320gsm 80% cotton 20% polyester fleece

Size: 4-14



WHITE

BLACK

RED 200

ROYAL 287

## COMMANDER HOODIE

CODE: SWT-H02



285gsm 80% cotton 20% polyester french terry

Size: S-3XL



WHITE

BLACK

RED 200



ROYAL 287

CHARCOAL 432

CHOCOLATE 7519

## CORPORAL HOODIE

CODE: SWT-HW02



285gsm 80% cotton 20% polyester french terry

Size: 8-16



WHITE

BLACK

RED 200



CHARCOAL 432

CHOCOLATE 7519

## THERMO SWEATSHIRT

CODE: SWT-03



320gsm 80% cotton 20% polyester fleece

Size: XS-3XL, 5XL



BLACK

NAVY

D.GREY MARLE 422

## STANDOUT POLO

CODE: P-F06



180gsm 100% polyester middle mesh Micro-Dry™

Fluoro Yellow/Navy, Fluoro Orange/Navy  
Size: S-3XL, 5XL



## VISION L/S POLO

CODE: P-FL07



180gsm 100% polyester middle mesh Micro-Dry™

Fluoro Yellow/Navy, Fluoro Orange/Navy  
Size: S-3XL, 5XL



## HI-VIS SAFETY VEST WITH REFLECTIVE TAPE

CODE: VST-F01



100% polyester

Fluoro Yellow, Fluoro Orange  
Size: S/M, L/XL, 2/3XL, 4/5XL



## HI-VIS SAFETY VEST

CODE: VST-F02



100% polyester

Fluoro Yellow, Fluoro Orange  
Size: S/M, L/XL, 2/3XL, 4/5XL



## COTTON DRILL L/S SHIRT

CODE: SHT-L19



190gsm 100% cotton drill

Khaki, Navy  
Size: S-6XL



## COTTON DRILL L/S SHIRT

CODE: SHT-18



190gsm 100% cotton drill

Khaki, Navy  
Size: S-6XL



## HI-VIS LIGHTWEIGHT S/S SHIRT

CODE: SHT-F10



155gsm 100% cotton drill

Fluoro Yellow/Navy, Fluoro Orange/Navy  
Size: S-6XL



## HI-VIS LIGHTWEIGHT L/S SHIRT

CODE: SHT-FL11



155gsm 100% cotton drill

Fluoro Yellow/Navy, Fluoro Orange/Navy  
Size: S-6XL



## HI-VIS LIGHTWEIGHT S/S REFLECTIVE TAPE SHIRT

CODE: SHT-FR12



155gsm 100% cotton drill

Fluoro Yellow/Navy, Fluoro Orange/Navy  
Size: S-6XL



## HI-VIS LIGHTWEIGHT L/S REFLECTIVE TAPE SHIRT

CODE: SHT-FRL13



155gsm 100% cotton drill

Fluoro Yellow/Navy, Fluoro Orange/Navy  
Size: S-6XL



## HI-VIS COTTON DRILL S/S SHIRT

CODE: SHT-F14



190gsm 100% cotton drill

Fluoro Yellow/Navy, Fluoro Orange/Navy  
Size: S-6XL



## HI-VIS COTTON DRILL L/S SHIRT

CODE: SHT-FL15



190gsm 100% cotton drill

Fluoro Yellow/Navy, Fluoro Orange/Navy  
Size: S-6XL



## HI-VIS COTTON DRILL S/S REFLECTIVE TAPE SHIRT

CODE: SHT-FR16



190gsm 100% cotton drill

Fluoro Yellow/Navy, Fluoro Orange/Navy  
Size: S-6XL



## HI-VIS COTTON DRILL L/S REFLECTIVE TAPE SHIRT

CODE: SHT-FRL17



190gsm 100% cotton drill

Fluoro Yellow/Navy, Fluoro Orange/Navy  
Size: S-6XL



## HI-VIS CREW NECK SWEATSHIRT

CODE: SWT-FL04



300gsm 100% polyester fleecy

Fluoro Yellow/Navy, Fluoro Orange/Navy  
Size: S-5XL



## HI-VIS FLEECE HOODIE

CODE: SWT-FHL05



300gms 100% polyester fleecy

Fluoro Yellow/Navy, Fluoro Orange/Navy  
Size: S-5XL



## HI-VIS FLEECY ZIP HOODIE

CODE: SWT-FHL06



300gms 100% polyester fleecy

Fluoro Yellow/Navy, Fluoro Orange/Navy  
Size: S-5XL



## HI-VIS FLEECY HALF ZIP PULLOVER

CODE: SWT-FL07



300gms 100% polyester fleecy

Fluoro Yellow/Navy, Fluoro Orange/Navy  
Size: S-5XL



## HI-VIS REFLECTIVE CAP

CODE: CP-FR09



100% polyester

Fluoro Yellow, Fluoro Orange



## HI-VIS LEGIONNAIRE CAP

CODE: CP-F10



100% polyester

Fluoro Yellow, Fluoro Orange



## HI-VIS REFLECTIVE HAT

CODE: HT-F02



100% polyester

Fluoro Yellow, Fluoro Orange



## MICRO FLEECE SCARF

CODE: SV-01



Micro poly fleece

Navy, Gray, Black



## MICROFIBRE BABY BIB

CODE: BB-B01



80% microfibre polyester  
20% polyamide

White



## KNIT TERRY BABY BIB

CODE: BB-B02



80% cotton 20% polyester terry

White/White, White/Blue, White/Pink



## FULL BIB APRON

CODE: AP-01



190gsm 65% polyester 35% cotton

White, Black, Navy, Royal



## HALF WAITER APRON

CODE: AP-02



190gsm 65% polyester 35% cotton

White, Black, Navy, Royal



## FULL WAITER APRON

CODE: AP-03



190gsm 65% polyester 35% cotton

White, Black, Navy, Royal



## JUNIOR APRON

CODE: AP-K04



65% polyester 35% cotton drill

White, Black



## THE CHEF APRON

CODE: AP-05



80gsm non woven

Blue, Black



## NON WOVEN APRON

CODE: AP-06



Non woven

Blue, Red



## COMPRESSED TEE

CODE: T-50



180gsm semi-combed cotton jersey

Shapes: Ice cream, T-Shirt, Circle, Mobile, Bottle, Bone, Can, Singlet, Oval, Heart, Guitar, Soccer Ball, Carrot



# HEADWEAR



## BASEBALL CAP

CODE: CP-01



Heavy brushed cotton

White, Black, Royal, Red, Gold, Bottle, Charcoal, Natural, Hot Pink, Powder Blue, Navy



## SANDWICH BASEBALL CAP

CODE: CP-02



Heavy brushed cotton

Black/Gold, Black/Orange, Black/Red, Black/White, Natural/Black, Natural/Navy, Red/Black, Red/White, Royal/Gold, Royal/White, White/Black, White/Navy, White/Red, White/Royal



## SPORT MESH CAP

CODE: CP-03



Nylon/mesh

Blue, White



## PROMO CAP

CODE: CP-04



100% heavy cotton twill

White, Black, Navy, Royal, Yellow, Orange, Red, Pink, Maroon, Purple



## SANDWICH PROMO CAP

CODE: CP-05



100% heavy cotton drill

White/Black, Black/White, Royal/White, Red/White, Yellow/White, Orange/White, Pink/White, Navy/White, Purple/White



## FASHION BASEBALL CAP

CODE: CP-06



100% heavy cotton drill

Black/Red/White, Red/Black/Yellow, Royal/Black/Orange, White/Royal/Yellow, Yellow/Black/White



## CONTRAST PEAK CAP

CODE: CP-07



100% heavy cotton drill

White/Green, White/Black, White/Royal, White/Red, White/Orange, White/Navy



## CONTRAST STITCH CAP

CODE: CP-08



100% heavy cotton drill

Black/Red, Red/White, Royal/White, White/Blue, Orange/White





## SANDWICH BUCKET HAT

CODE: HT-01



Heavy brushed cotton

Black/Black, Black/Red, Black/White, Navy/Navy, Natural/Black, Natural/Navy, Royal/Gold, Royal/Red, Royal/White, Royal/Royal, White/White, White/Royal



## ACRYLIC BEANIE

CODE: BE-01



100% acrylic

Black, Grey, Navy



## GOLF VISOR

CODE: V-01



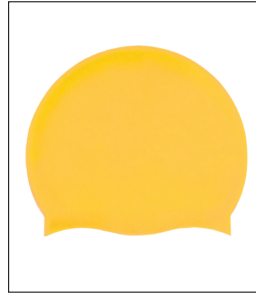
100% heavy cotton twill

White, Red, Purple, Royal, Navy, Pink



## SWIM CAP

CODE: SM-01



Silicone

Black, Bronze, Cyan, Gold, Green, Red, Royal, Silver, White



# BAGS, POUCHES & TOTES



## EVERYDAY COOLER BAG

CODE: CB-01



70D polyester  
White, Black, Royal, Red, Navy



## ICE RIVER SEAT COOLER

CODE: CB-04



600D and 1680D rip-stop nylon  
Camo, Royal, Black, Red, Pink



## ICE RIVER ROLLING COOLER

CODE: CB-R05



600D rip-stop nylon  
Black, Camo, Red, Blue



## COMPANION COOLER

CODE: CB-06



Neoprene  
Black, Red, Royal



## ICE RIVER 20 CAN COOLER

CODE: CB-07



600D and 1680D rip-stop nylon  
Black, Royal, Red



## ICE RIVER SPEAKER COOLER

CODE: CB-08



600D and 1680D rip-stop nylon  
Black, Royal, Red



## ICE RIVER BACKPACK COOLER

CODE: CB-09



600D and 1680D rip-stop nylon  
Red, Black, Camo, Royal



## ICE RIVER MAX PACK COOLER

CODE: CB-10



600D and 1680D rip-stop nylon  
Black, Camo



**ICE RIVER LITE COOLER BAG**

CODE: CB-11



600 denier polyester / PEVA / PE sponge

Black/Gray, Black/Royal, Black/Red



**ICE RIVER PRO COOLER**

CODE: CB-12



840D polyester/PE foam/PEVA

Red, Royal, Black



**LUNCH SACK COOLER**

CODE: CB-L13



100gsm non woven polypropylene

Yellow, Royal, Black, Navy, Red



**VALUE COOLER**

CODE: CB-14



100gsm non woven polypropylene

Black, Red, Royal, Navy, Yellow



**CELEBRATION BUCKET COOLER**

CODE: CB-15



70D nylon

Black, Red, Royal



**ROLLING COOLER**

CODE: CB-R16



70D nylon

Black, Royal, Red



**ICE RIVER 6 CAN COOLER**

CODE: CB-17



600D, 1680D rip-stop nylon

Black, Royal, Red



**ICE RIVER 9 CAN COOLER**

CODE: CB-18



600D, 1680D rip-stop nylon

Royal, Red



## REGAL STANDARD LUNCH PACK

CODE: CB-L19



210D polyester  
Lime Green, Red, Blue,  
Forest Green



## DAYTRIP DELUXE LUNCH PACK COOLER

CODE: CB-L20



70D polyester  
Royal, Red



## PENPAL STANDARD 6-PACK COOLER

CODE: CB-21



210D polyester  
Forest Green, Red, Lime, Royal



## PALM DELUXE 6 PACK COOLER

CODE: CB-22



70D polyester  
Blue, Forest Green, Lime, Red, Sky, Yellow, Pink



## BIG KAHUNA INSULATED SHOPPING BAG

CODE: CB-23



80gsm polypropylene  
Navy, Lime, Royal, Red, Forest Green



## BEACH BUM PORTABLE DRINK CARRIER

CODE: CB-24



70D polyester  
Black, Royal, Red



## COSMETIC BAG

CODE: UB-T01



60% cotton 40% polyester  
waffle weave  
White, Aqua, Black, Dark Chocolate,  
Hot Pink, Light Pink, Lavender, Lime,  
Navy, Purple



## UTILITY BAG

CODE: UB-F03



190T polyester  
Red, Blue



**SMALL COSMETIC BAG**  
CODE: UB-T04



60% cotton 40% polyester waffle weave  
Aqua, Black, Dark Chocolate, Lime, Hot Pink, Light Pink, Lavender, White, Navy, Purple



**MAYBERRY COSMETIC BAG**  
CODE: UB-T05



PVC  
Frost White, Frost Lime, Frost Orange, Frost Pink, Frost Blue



**SHOE BAG**  
CODE: UB-S06



Nylon  
Blue



**FOLDAWAY BAG**  
CODE: UB-F07



Nylon  
Red, Blue



**FOLDING TOTE BAG**  
CODE: UB-F08



Non Woven  
White, Red, Blue, Black, Green



**GUILD CONFERENCE BAG**  
CODE: BF-01



600D polyester  
Black/Silver/Red zip, Black/Silver/Royal zip, Black/Black/Silver zip



**MAINSTREAM LAPTOP SATCHEL**  
CODE: BF-02



600D polyester/PVC  
Black/Silver



**SLIPSTREAM LAPTOP SATCHEL**  
CODE: BF-03



600D polyester/PVC  
Black



## ALPHA EZ SCAN COLLECTION

CODE: BF-04



1680D polyester, 420D dobby rip-stop

Black



## ALPHA EZ SCAN COMPU-PACK

CODE: BP-C07



1680D polyester, 420D dobby rip-stop

Black



## CITY COMPU-CASE

CODE: BF-05



Microfibre

Black



## HOOK COMPU-CASE

CODE: BF-06



420D dobby, 600D polyester, 210D polyester

Black, Royal, Red



## HOOK TABLET BRIEF

CODE: BF-07



420D dobby, 600D polyester, 210D polyester

Black, Royal, Red



## HOOK DRAWSTRING BACKPACK

CODE: BP-S09



85gsm non woven polypropylene

Black, Royal, Red



## CARRIER BACKSACK

CODE: BP-S01



210D polyester

Black, White, Navy, Yellow, Red, Royal



## SEABREEZE BACKPACK

CODE: BP-02



600D polyester

Black/Royal/Silver, Black/Red/Silver



## SEASPRAY BACKPACK

CODE: BP-03



600D polyester  
Black/Royal/Silver, Black/Red/Silver



## MUSTANG SLING BACKPACK

CODE: BP-S04



210D polyester  
Black, Red, Blue



## QUENCH HYDRATION PACK

CODE: BP-05



840D polyester and 420  
rip-stop nylon  
Black, Royal



## TAOS COMPU-PACK

CODE: BP-C06



600D and 840D polyester  
Royal, Black, Hunter Green, Red



## CITY COMPU-PACK

CODE: BP-C08



Microfibre  
Black



## ACE BACKPACK

CODE: BP-11



600D, 1680D polyester  
Black/Gray



## MINI HYDRATION PACK

CODE: BP-12



210D nylon  
Black



## FEATHERLITE QUICK DRAW PACK

CODE: BP-S10



80gsm non woven polypropylene  
Black, Pink, Kelly Green, Hunter Green, Gray,  
Yellow, Orange, White, Red, Light Blue, Royal,  
Navy, Maroon





## DRAWSTRINGER

CODE: BP-S13



210D polyester

Black/Lime, Black/Royal, Black/Red



## BARATO DRAWSTRING BACKPACK

CODE: BP-S14



210D polyester

White, Black, Royal, Yellow, Kelly Green, Burgundy, Navy, Pink, Purple, Red, Sky



## ORION DRAWSTRING BACKPACK

CODE: BP-S15



80gsm polypropylene

Black, Blue, Red



## LYNX MESH DRAWSTRING BACKPACK

CODE: BP-S16



190T polyester

Royal, Red



## POLARIS DELUXE DRAWSTRING BACKPACK

CODE: BP-S17



190T polyester

Sky/Black, Red/Black, Purple/Black, Pink/Black, Orange/Black, Lime/Black, Black/Black, Royal/Black, Yellow/Black



## CANYON DRAWSTRING BACKPACK

CODE: BP-S18



80gsm polypropylene

Black, Royal, Lime, Navy, Red



## LUNA DRAWSTRING BACKPACK

CODE: BP-S19



210D polyester

Red, Black, Royal, Navy



## SLINGBACKER

CODE: BP-S20



210D polyester

Black/Yellow, Black/Royal, Black/lime, Black/Orange, Black/Purple, Black/Red



## NYLON DRAWSTRING BACKPACK

CODE: BP-S21



Nylon  
Blue, Red, White



## CONTENDER SPORTS BAG

CODE: DF-01



600D polyester  
Black/Red, Black/Yellow



## MEDALLIST SPORTS BAG

CODE: DF-02



600D polyester  
Black/Red, Black/Silver



## CREW DUFFLE BAG

CODE: DF-03



600D polyester  
Black/Red, Black/Royal, Navy/Royal



## VELOCITY ROLLING DUFFEL

CODE: DF-R04



600D polyester  
Black, Royal, Red



## VELOCITY SPORT DUFFEL

CODE: DF-05



600D polyester and 210D  
dobby nylon  
Black, Royal, Red



## GAME DAY DUFFEL

CODE: DF-06

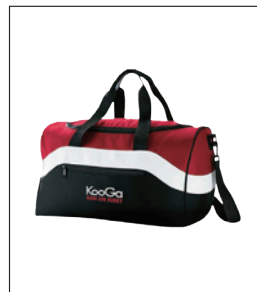


600D polyester  
Black, Red, Royal



## TROOPER DUFFEL

CODE: DF-07



600D polyester  
Black, Red, Blue, Hunter Green



## TRAINER DUFFEL

CODE: DF-08



600D polyester  
Red, Royal, Black



## LONG HAUL STRUCTURED DUFFEL BAG

CODE: DF-09



600D polyester  
Red, Blue, Black



## OVERNIGHTER DUFFEL BAG

CODE: DF-10

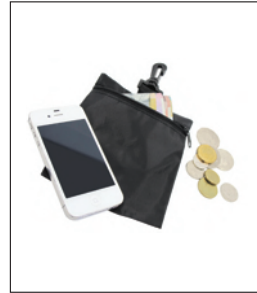


190T polyester  
Blue, Black



## ZIP POUCH WITH SAFETY CLIP

CODE: PCH-01



210D water-resistant nylon  
Black



## TRAVEL POUCH

CODE: PCH-03



210D water-resistant nylon  
Black



## PALOMINO VINYL COIN & KEY POUCH

CODE: PCH-04



PVC  
Blue, Green, Red



## CAMPOLINA COIN & KEY POUCH

CODE: PCH-05



Polyester  
Blue, Green, Red



## NEOPRENE POUCH

CODE: PCH-02



Neoprene  
Black, Royal, Red



## TEACHERS PET 3-RING ORGANISER

CODE: PCH-S06



PVC/polyester

Purple, Orange, Yellow, Blue, Green, Red



## SHOPPING BAG

CODE: TT-N01



80gsm non-woven polypropylene

Black, White, Green, Red, Royal, Navy



## SLING BAG

CODE: TT-N02



80gsm non-woven polypropylene

White, Royal, Red, Navy, Black



## TOTE BAG

CODE: TT-N03



80gsm non-woven polypropylene

Black, White, Green, Grey, Navy, Orange, Purple, Red, Royal



## V-GUSSET TOTE BAG

CODE: TT-N04



80gsm non-woven polypropylene

Black, White, Green, Grey, Navy, Orange, Purple, Red, Royal, Hot Pink



## DIE-CUT HANDLE TOTE BAG

CODE: TT-N05



80gsm non-woven polypropylene

Red, Royal, Black, White



## BOAT MATE GUSSETED CANVAS TOTE

CODE: TT-C06



100% Natural cotton canvas

Blue, Red, Sand



## CALICO BAG SHORT HANDLE

CODE: TT-C07



140gsm 100% cotton

Natural



## CALICO BAG LONG HANDLE

CODE: TT-C08



140gsm 100% cotton  
Natural



## SINGLE BOTTLE WINE TOTE

CODE: TT-W09



600D polyester 100% reusable  
Burgundy, Black



## RIOJA 2 WINE BOTTLE CARRIER

CODE: TT-W10



90gsm non-woven polypropylene  
100% reusable and recyclable  
White, Black, Burgundy



## SANTA FE TOTE

CODE: TT-C11



270gsm canvas trim and  
135gsm canvas body  
Red, Pink, Black, Sage, Navy, Orange



## HARTFORD TOTE

CODE: TT-C12



680gsm heavy dyed canvas body  
Navy, Sand, Black



## VISION TOTE

CODE: TT-V13



Vinyl/Nylon  
White, Blue, Red, Pink



## HAMILTON COMPU-TOTE

CODE: TT-C14



Canvas, Simulated Leather  
Tan



## HOOK TOTE

CODE: TT-C15



600D polyester  
Royal, Red, Black



## LOOP CONVENTION TOTE

CODE: TT-C16



600D polyester  
Black/Royal, Black/Red



## HANOVER TOTE

CODE: TT-C17



Cotton canvas/leather  
Black



## REEF TOTE

CODE: TT-C18



Cotton canvas  
Bag: Natural  
Handle: Blue, Red, Black



## BAR HARBOUR TOTE

CODE: TT-C19



Canvas  
Natural/Black



## NON-WOVEN SLING TOTE

CODE: TT-N20



80gsm non woven polypropylene  
Black, Royal, Green, Red, Pink



## CLASSIC TOTE

CODE: TT-C21



600D polyester  
Black/Red, Black/Blue, Black/Lime



## SLEEK TOTE

CODE: TT-C22



600D polyester  
Black/Green, Black/Blue, Black/Red



## CONVENTIONAL TOTE

CODE: TT-C23



600D polyester  
Black/Lime, Black/Blue, Black/Red



## MARDI GRAS MULTI COLOURED TOTE

CODE: TT-N24



80gsm polypropylene  
Blue, Red, Lime



## METRO MESSENGER SHOULDER TOTE

CODE: TT-N25



80gsm polypropylene  
Charcoal, Lime, Red, Blue



## MORGEN NON-WOVEN TOTE

CODE: TT-N26



80gsm polypropylene  
Blue, Black, Lime, Navy, Red, Orange



## MAHALO LIGHTWEIGHT SHOPPING BAG

CODE: TT-NG27



40gsm polypropylene  
Black, Lime, Red, White, Blue



## MONTE OVERSIZED SHOPPING BAG

CODE: TT-NG28



80gsm non woven polypropylene  
Natural, Red, Blue



## NON WOVEN TOTE

CODE: TT-N29



Non woven  
Blue, Red, Black, White



## BALL SHOPPING BAG

CODE: TT-G30



ABS (Acrylonitrile Butadiene Styrene)  
Red, Blue, White



## PLAYLUGGAGE - MILANO

CODE: LG-01



Aluminium frame, ABS+PC coating  
Magnetic chess pieces



## PLAYLUGGAGE - VIENNA

CODE: LG-02



Aluminium frame, ABS+PC coating  
Playing cards+60 poker chips



## PLAYLUGGAGE - SHANGHAI

CODE: LG-03



Aluminium frame, ABS+PC coating  
Magnetic Chinese chess pieces



## PLAYLUGGAGE - CUSTOM OPTIONS

CODE: LG-04



Aluminium frame, ABS+PC coating  
Custom design



## PLAYLUGGAGE - CUSTOM PROMO CARRY-ON LUGGAGE

CODE: LG-05



Aluminium frame, ABS+PC coating  
Custom design



## PLAYLUGGAGE - CUSTOM PROMO INSERT

CODE: LG-06



Aluminium frame, ABS+PC coating  
Black, Red, Blue, Gray, White





# PLAYLUGGAGE



- ▶ Aluminium frame, ABS + PC coating
- ▶ Playluggage is not an ordinary suitcase, it has a distinctive graphic design
- ▶ Ultralightweight aluminum frame with lining
- ▶ Durable ABS material/PC coating is moisture resistant and protects luggage from external sources
- ▶ Telescoping handle for easy manoeuvrability
- ▶ Reliable 2 wheels are equipped with quality bearings and designed shields
- ▶ TSA locks for easy opening while travelling in the United States
- ▶ Deep rearward luggage cover allows to easily pack things and close the upper cover
- ▶ Graphic design inspired by a variety of games, colours and tattoos
- ▶ 5 years warranty applies to: ABS+PC coating, wheels, aluminium frame, TSA locks and handle
- ▶ Size: Carry-on Luggage 480x320x200 mm, 27 litres, 2.6 kg (excluding games pieces)



CODE: LG-01  
Magnetic chess pieces



CODE: LG-02  
Playing cards and 60 poker chips



CODE: LG-03  
Magnetic Chinese chess pieces

# PLAYLUGGAGE - CUSTOM OPTIONS

CODE: LG-04



- ▶ Custom promo with Game Board options or Custom Branding
- ▶ Aluminium frame, ABS + PC coating
- ▶ Playluggage is not an ordinary suitcase, CUSTOM DESIGN your very own graphics on the suitcase
- ▶ Choose from a variety of game boards - chess, Chinese chess, poker, backgammon, ludo/trouble, Chinese checkers or create your own custom branding board
- ▶ Durable ABS material/PC coating is moisture resistant and protects luggage from external sources
- ▶ Ultra lightweight aluminum frame with lining or zipper option
- ▶ Telescoping handle for easy manoeuvrability
- ▶ Reliable 2 wheels are equipped with quality bearings and designed shields
- ▶ TSA locks for easy opening while travelling in the United States
- ▶ Deep rearward luggage cover allows to easily pack things and close the upper cover
- ▶ 5 years warranty applies to: ABS+PC coating, wheels, aluminium frame, TSA locks and handle
- ▶ Size: Carry-on Luggage 480x320x200 mm, 27 litres



CHESS

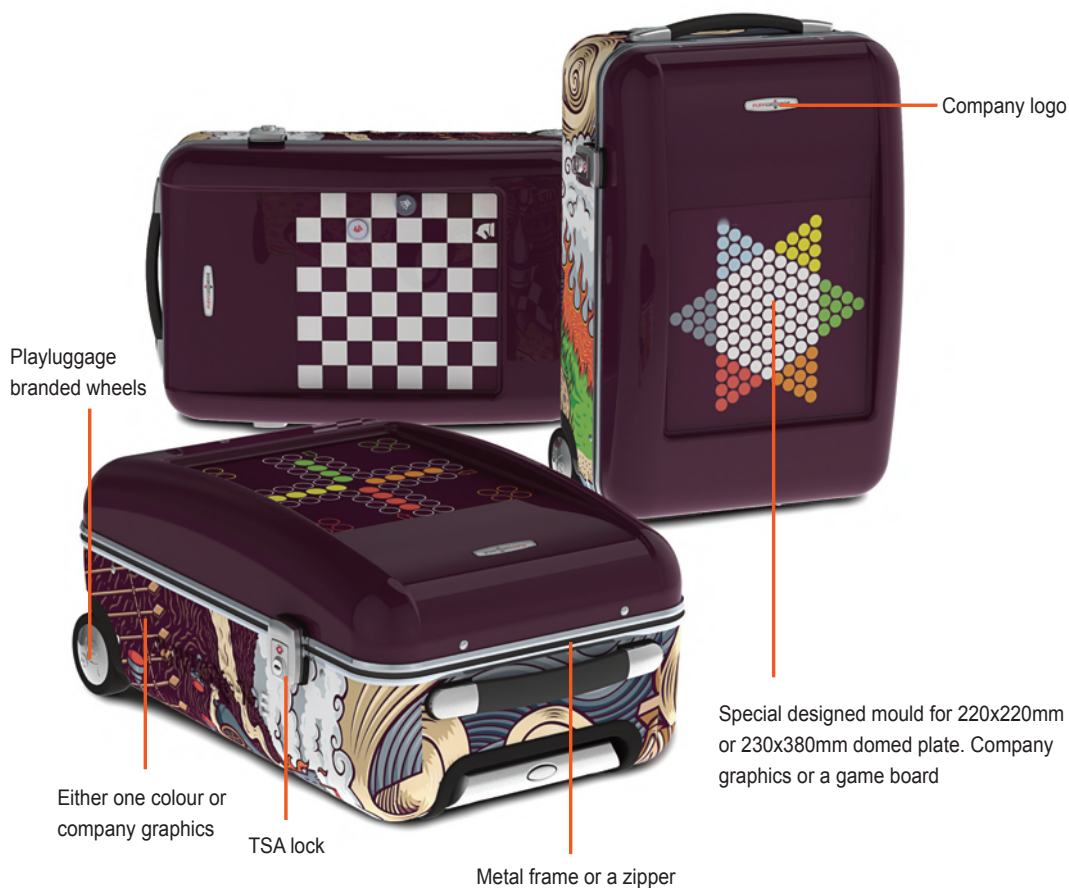
CHINESE CHESS

LUDO/TROUBLE

BACKGAMMON

CHINESE CHECKERS

POKER



Playluggage  
branded wheels

Company logo

Special designed mould for 220x220mm  
or 230x380mm domed plate. Company  
graphics or a game board

Either one colour or  
company graphics

TSA lock

Metal frame or a zipper

# DRINKWARE



**ROADSTER TRAVEL MUG**

CODE: MG-M01



Stainless steel/PP  
Silver



**DASH TRAVEL MUG**

CODE: MG-M02



Stainless steel/PP  
Silver, Red, Blue



**COUPE TRAVEL MUG**

CODE: MG-M03



Plastic  
White, Blue, Black



**DOUBLE WALL COFFEE CUP**

CODE: MG-04



HDPP/TPR lid  
Body: White, Black  
Lid: Black, Blue, Green, Red, Orange, White



**SOUP MUG SOUPREME™**

CODE: MG-S05



BPA free plastic  
White, Blue, Black



**COURIER MUG**

CODE: MG-06



Plastic  
Black, Purple, Red, White, Blue, Clear



**VELOCITY RECYCLED TRAVEL MUG**

CODE: MG-07



BPA and lead free plastic  
Blue, Lime, White



**LAUNCH RECYCLED MUG**

CODE: MG-08



BPA and lead free plastic  
Red, Blue, White



**TALLADEGA MUG**

CODE: MG-C10



Ceramic

Red, Orange, Green, Blue, Black, Purple, Yellow, Pink, Black tyre band



**ARC NORDIC GLASS**

CODE: MG-G12



Glass

Clear



**ION™ TRAVEL & DESKTOP MUG**

CODE: MG-13



SAN (Styrene Acrylonitrile)

Clear, Black, Transparent Sapphire Blue, Transparent Purple



**DRINKABOUT™ TRAVEL & DESKTOP MUG**

CODE: MG-14



SAN (Styrene Acrylonitrile)

Transparent Sapphire Blue, Black, White



**ARRONDI™ MUG**

CODE: MG-15



SAN (Styrene Acrylonitrile)

Body: White, Clear, Black, Transparent Ruby Red, Transparent Sapphire Blue, Transparent Purple, Transparent Green  
Lid: Black (Optional)



**FLUTED MUG**

CODE: MG-16



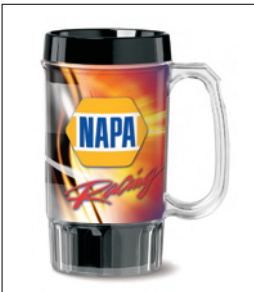
SAN (Styrene Acrylonitrile)

White, Opaque Black, Transparent Orange, Transparent Sapphire Blue



**THERMALPLAY TRAVEL MUG**

CODE: MG-17



SAN (Styrene Acrylonitrile)

Clear Mug/ Black Trim/Lid



**VISIONSTEEL CONTOUR TRAVEL MUG**

CODE: MG-M18



BPA free Steel / Acrylic

Stainless Steel/Acrylic  
Accent & Lid: Green, Blue, Clear



**AUTO CERAMIC MUG**

CODE: MG-CM19



Ceramic  
White



**EVENT SPORT BOTTLE**

CODE: BT-01



Plastic  
Black, White



**ACTIVE ALUMINIUM BOTTLE**

CODE: BT-M02



Aluminium  
Aluminium



**REBEL DRINK BOTTLE**

CODE: BT-03



BPA-free plastic  
Red, Blue



**SPORTS BOTTLE**

CODE: BT-08



BPA free recyclable HDPE  
Body: White, Black  
Lid: White, Black, Blue, Lime, Orange, Red

Body

Lid



**INFUSER WATER BOTTLE**

CODE: BT-I09



Tritan™  
Clear



**SILI WINDOW GLASS BOTTLE**

CODE: BT-G10



Glass  
Blue, Green, Orange, Pink, Purple, Red, Yellow



**CRACKLE**

CODE: BT-T12



Tritan™  
Blue, Clear



**G-STORM**

CODE: BT-M13



Eco-friendly and BPA free  
Red, Green, Blue, Purple, Black, Silver, White



**SILI SQUARE GLASS BOTTLE**

CODE: BT-G14



Glass  
Red, Yellow, Green, Blue, Black, White



**TUSCAN**

CODE: BT-15



Plastic  
Black, White



**CRUISER**

CODE: BT-16



Plastic  
Smoke, Blue, Red



**ALTA TRITAN WATER BOTTLE**

CODE: BT-T17



Tritan™  
Camo, Black, Navy, Royal, Purple, Maroon, Red, Forest Green, Teal, Lime, Yellow, Orange, Pink, Ocean Blue, Kelly Green, Fuchsia



**COBRA WRAP BOTTLE**

CODE: BT-M18



Stainless steel with leatherette sleeve  
Rustic Brick, Plum, Tangerine, Goldenrod, Pink, Black, Dark Brown, Tan, Navy, Forest Green, Gray



**BULLET WRAP BOTTLE**

CODE: BT-M19



Stainless steel with leatherette sleeve  
Rustic Brick, Plum, Tangerine, Goldenrod, Pink, Black, Dark Brown, Tan, Navy, Forest Green, Gray



**MANHATTAN WRAP BOTTLE**

CODE: BT-M20



Stainless steel with leatherette sleeve  
Rustic Brick, Plum, Tangerine, Goldenrod, Pink, Black, Dark Brown, Tan, Navy, Forest Green, Gray



**COBRA TRITAN BOTTLE**

CODE: BT-T21



Tritan™ copolyester  
Clear



**BULLET TRITAN BOTTLE**

CODE: BT-T22



Tritan™ copolyester  
Clear



**MANHATTAN TRITAN BOTTLE**

CODE: BT-T23



Tritan™ copolyester  
Clear



**EXCURSION COLOUR BOTTLE**

CODE: BT-T24



SAN (Styrene Acrylonitrile)  
Black, Blue, Green, Red, White



**EXCURSION BOTTLE WITH CAP AND STRAP**

CODE: BT-T25



SAN (Styrene Acrylonitrile)  
Clear with four colour process insert



**ZORRO SPORTS BOTTLE**

CODE: BT-34



BPA free plastic  
Black/Aqua, Black/Clear, Black/Green,  
Black/Purple, Black/Blue, Black/Red,  
White/Red, White/Blue, White/Green



**TRUENO SPORTS BOTTLE**

CODE: BT-35



BPA free plastic  
Aqua, Smoke, Blue, Clear, Green, Red



**PACIFICA WATER BOTTLE**

CODE: BT-36



BPA free HDPE  
Bottle: Black, Blue, Frost(Semi Clear),  
Granite, Lime, Orange, Red, White,  
Yellow  
Lids: Blue, Red, Black, White, Green,  
Orange, Yellow, Purple, Teal





**DROMEDARY COLLAPSIBLE WATER BOTTLE**

CODE: BT-37



BPA free nylon

Translucent Clear, Translucent Green, Translucent Red, Translucent Blue



**RAINIER WATER BOTTLE**

CODE: BT-38



BPA free polystyrene

Translucent Red, Translucent Blue, Translucent Clear, Translucent Orange



**LIBERTY WATER BOTTLE**

CODE: BT-39



BPA free Tritan™

Body: Black, Translucent Clear, Translucent Blue  
Lid: White, Black, Orange, Red, Blue, Yellow, Purple, Green, Teal



**MARINA SPORTS BOTTLE**

CODE: BT-40



BPA free plastic

Body: White  
Lid: White, Black, Orange, Red, Blue, Yellow, Purple, Green



**RANGER WATER BOTTLE**

CODE: BT-M41



BPA free stainless steel

Black, Blue, Purple, Green, Red, Silver



**DOLANI BOTTLE**

CODE: BT-42



BPA free Tritan™ plastic

Orange, Green, Black, Blue, Red



**DEL MONTE INFUSER BOTTLE**

CODE: BT-I43



BPA free Tritan™ plastic

Orange, Red, Black, Blue, Green



**MONTIGO BAY WATER BOTTLE**

CODE: BT-M44



Stainless Steel

Silver, Black, Blue



**ARCTIC SPORTS BOTTLE**

CODE: BT-M45



Aluminium  
Red, Orange, Green, Blue, Silver, Black



**MESSAGE ON A BOTTLE**

CODE: BT-M46



BPA free stainless steel  
White



**ECO RIO SPORTS BOTTLE**

CODE: BT-47



BPA free plastic  
Blue, Green, Orange, Purple, Red, Smoke



**SIMPLICITY BOTTLE**

CODE: BT-T48



BPA free Tritan™ plastic  
Red, Black, Blue, Green, Orange, Yellow, Purple



**CARMEL BOTTLE**

CODE: BT-49



BPA free Tritan™ plastic  
Red, Blue, Green, Clear, Orange, Purple



**ALTA DEFENDER GLASS BOTTLE**

CODE: BT-G50



Borosilicate glass  
Camo, Black, Navy, Royal, Purple, Maroon, Red, Forest Green, Teal, Lime, Yellow, Orange, Pink, Ocean Blue, Kelly Green, Fuchsia



**BEND-A-BOTTLE**

CODE: BT-51



BPA free  
Clear, Gray, Purple, Blue, Green, Pink, Red



**THERMAL SPORT WATER BOTTLE**

CODE: BT-52



SAN (Styrene Acrylonitrile)  
Bottle: Clear  
Top: Black W/Gray Flip Lid



## SAVE-A-BOTTLE

CODE: BT-T53



Durable Eastman Tritan™  
Sapphire Blue, White, Gem Green



## REFIL WATER BOTTLE

CODE: BT-T54



Durable Eastman Tritan™  
Blue, Smoke, Purple



## CASCADE WATER BOTTLE

CODE: BT-M55



Steel  
Brushed Steel/Gray/Green,  
Steel Green/Gray/Green



## FOLDABLE WATER BOTTLE

CODE: BT-56



PET (Polyethylene Terephthalate)  
Red, Blue, White, Black, Orange, Green



## SNAP ON WATER BOTTLE

CODE: BT-57



PET (Polyethylene Terephthalate)  
White, Red, Blue, Green



## SPORTS WATER BOTTLE

CODE: BT-58



Tritan™  
Red, Blue



## BLENDER BOTTLE

CODE: BT-59



Polypropylene  
Red, Blue



## FLEXIBLE WATER BOTTLE

CODE: BT-60



Polyethylene  
Red, Blue



**LEMON JUICE BOTTLE**

CODE: BT-I61



AS (Acrylonitrile Styrene Plastic)  
Green



**ALUMINIUM BOTTLE**

CODE: BT-M62



Stainless Steel  
Red, Blue



**ICE TUMBLER WITH STRAW**

CODE: TB-D01



BPA free polystyrene  
Blue, Clear, Red, Smoke



**TAKEOUT TUMBLER**

CODE: TB-D02



BPA & Phthalate free  
Body: Clear with full wrap-around colour imprinting  
Lid & Straw: Options available



**THERMAL TRAVELLER™ TRAVEL TUMBLER**

CODE: TB-T03



BPA free plastic  
Body: Clear with full wrap-around colour imprinting  
Lid: White, Black, Blue



**ARRONDI™ TRAVEL MUG**

CODE: TB-T04



BPA free plastic  
Blue, Smoke, Green, Black, White



**TAKEOUT TUMBLER INFUSER**

CODE: TB-I05



BPA free plastic  
Body: Clear  
Lid: Blue, Clear, Green  
Straw: Clear, Blue, Red, Green, Smoke



**SILI SQUARE CERAMIC TUMBLER**

CODE: TB-C06



BPA free ceramic  
Yellow, Black, Red, Orange, Blue, White, Green, Purple



**GLITTER SLURPY CUP**

CODE: TB-D07



BPA free acrylic  
20 insert styles available



**FLAVORADE CUP**

CODE: TB-I08



BPA free acrylic  
Red, Orange, Green, Blue, Smoke



**REUSABLE PLASTIC PARTY CUP**

CODE: TB-09



BPA free Tritan™ plastic  
Red, Yellow, Black, Blue, Dark Blue



**HOLLYWOOD GLITTER TUMBLER**

CODE: TB-D10



BPA free acrylic  
Body: Clear with full wrap-around colour imprinting (30 insert styles available)



**SLURPY**

CODE: TB-D11



BPA free acrylic  
Blue, Clear, Green, Orange, Red, Purple, Smoke, Yellow



**VENTI SLURPY**

CODE: TB-D12



BPA free acrylic  
Blue, Clear, Green, Orange, Red, Purple, Smoke, Yellow



**SILI SQUARE VENTI**

CODE: TB-D13



BPA free plastic  
Black, Blue, Orange, Purple, Green, Red, White, Yellow



**HOLLYWOOD**

CODE: TB-D14



BPA free plastic  
Clear





**PARTY TUMBLER**

CODE: TB-D15



BPA free plastic  
Red, Black, Blue, Yellow



**REGENCY TUMBLER**

CODE: TB-M16



Stainless steel/SAN  
Black, D.Brown, Tan, Navy Blue, Forest Green, Gray, Rustic Brick, Plum, Tangerine, Goldenrod, Pink



**TOGO CERAMIC TUMBLER**

CODE: TB-C17



Ceramic with leatherette sleeve  
Black, D.Brown, Tan, Navy Blue, Forest Green, Gray, Rustic Brick, Plum, Tangerine, Goldenrod, Pink



**HYDRA 8 TUMBLER**

CODE: TB-18



Polypropylene  
Blue, Green, Orange, Pink, Purple, Red, Smoke, Yellow



**CRAZY STRAW TUMBLER**

CODE: TB-19



BPA free Acrylic  
Blue, Pink, Purple, Red, Orange, Yellow, Green



**BUMPER TUMBLER**

CODE: TB-20



BPA free Acrylic  
Blue, Green, Magenta, Orange, Brown, Black, Purple, Red



**BURPY 2**

CODE: TB-21



BPA free Acrylic  
Red, Orange, Yellow, Green, White, Black, Brown, Tan, Black Tyre, Blue, Purple, Hot Pink, Pink



**SAN PALO TUMBLER**

CODE: TB-D22



BPA free with silicone grip  
Red, Blue, Black



**CUP FOR A CAUSE™**

CODE: TB-D23



BPA free Acrylic  
Blue, Green, Orange, Pink, Purple, Red, Yellow, Stripe



**LEVANA TUMBLER**

CODE: TB-D24



BPA free Acrylic  
Green, Orange, Pink, Purple, Red, Yellow, Black, Blue



**SANTANA TUMBLER**

CODE: TB-D25



BPA free Stainless Steel  
Heat changing or paper insert



**CHIANTI TUMBLER**

CODE: TB-DM26



BPA free Stainless Steel  
Heat Insert, Blue, Black, Red, Purple, Teal, White, Yellow, Clear, Green, Orange, Pink



**LUXOR TUMBLER**

CODE: TB-M27



Stainless Steel  
Clear



**JAVA**

CODE: TB-C28



BPA free ceramic  
Purple, Green, Tan, Blue, Pink, Orange, Red, Yellow, White



**BARISTA**

CODE: TB-C29



BPA free ceramic  
Red, Orange, Green, Blue, Brown, Black



**EMPIRE**

CODE: TB-M30



BPA free Stainless Steel  
Black, Red, Silver, Blue



**ROCKER**

CODE: TB-M31



BPA free Stainless Steel  
Black, Silver



**ST TROPEZ**

CODE: TB-M32



BPA free Stainless Steel  
White, Blue, Black, Wood Finish



**DAYTONA**

CODE: TB-DM33



BPA free Stainless Steel  
Stainless steel



**ASTOR**

CODE: TB-DM34



BPA free Stainless Steel  
Stainless Steel with leatherette sleeve



**BRAZILIAN BAND CUP**

CODE: TB-D35



BPA free plastic  
Body: White  
Band & lid: White, Black, Red, Orange, Yellow, Green, Blue, Purple, Pink, H.Pink, Tan, Brown; Black Tyre band with black lid



**THERMALPRO® TRAVEL TUMBLER**

CODE: TB-38



SAN (Styrene Acrylonitrile)  
Clear body with wrap printing



**THERMALTRAVELLER™ METALLIC FOIL**

CODE: TB-39



SAN (Styrene Acrylonitrile)  
Red, Smoke, Blue, Green



**VISIONSTEEL CONTOUR TRAVEL TUMBLER**

CODE: TB-M40



Steel/Acrylic  
Body: Stainless steel  
Accent & Lid: Smoke, Blue, Clear





**VISIONSTEEL TRAVEL TUMBLER**

CODE: TB-M41



BPA free Steel/Acrylic

Clear, Black, Transparent Sapphire Blue, Transparent Ruby Red



**MONTE CARLO**

CODE: TB-C42



Ceramic cup, silicone lid

Body: White  
Lid: White, Blue, Green, Orange, Pink, Purple, Red, Yellow; Black tyre band with black lid



**STAINLESS STEEL VACUUM FLASK**

CODE: TB-D43



Stainless Steel

Black, White



**COFFEE CUP**

CODE: TB-44



Polypropylene

White



**BULLET VACUUM FLASK**

CODE: TB-M45



Stainless Steel

Silver



**ROYALE DELUXE COLLAPSIBLE CAN COOLER**

CODE: CO-01



Vinyl

Black, Blue, Lime Green, Purple, Red, Yellow



**THE ORIGINAL COLLAPSIBLE CAN COOLER**

CODE: CO-02



Polyester foam

Black, Blue, Camo, Green, Lime, Orange, Purple, Red, Yellow



**CHAMP WATER BOTTLE CADDY**

CODE: CO-03



Polyfresh™

Charcoal/Black, Red/Black, Royal/Black





**BOTTLE BUTLER**

CODE: BA-H01



Plastic  
Clear, Red



**REGENCY COASTER**

CODE: BA-C02



Leatherette with rubber base  
Black, Dark Brown, Tan, Navy, Forest Green, Gray, Rustic Brick, Plum, Tangerine, Goldenrod, Pink



**REGENCY COASTER**

CODE: BA-C03



Leatherette with rubber base  
Black, Dark Brown, Tan, Navy, Forest Green, Gray, Rustic Brick, Plum, Tangerine, Tangerine



**COMPANION CORKSCREW**

CODE: BA-O04



ABS (Acrylonitrile Butadiene Styrene)  
White



**COASTER RICA**

CODE: BA-C05



Stainless Steel & Leatherette  
Stainless steel/Black



**WINE AERATOR**

CODE: BA-06



Plastic  
Black



**WINE STOPPER**

CODE: BA-07



Plastic  
Silver/White



**METAL WINE STOPPER**

CODE: BA-08



Stainless Steel  
Silver/Black



**WINE GIFT SET**

CODE: BA-09



Stainless Steel  
Rosewood Box



**POCKET CORKSCREW**

CODE: BA-O10



Plastic  
White, Black



**HANDLE CORKSCREW**

CODE: BA-O11

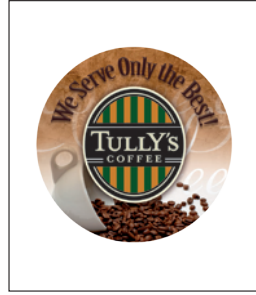


Plastic/Metal  
Black, Translucent Blue, Translucent Red



**CIRCLE COUNTER MAT**

CODE: BA-12



Laminate surface  
Custom design



**RECTANGLE COUNTER MAT**

CODE: BA-13

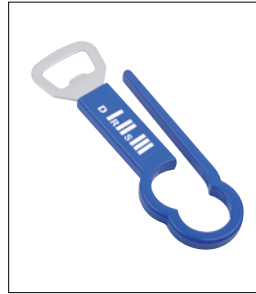


Laminate surface  
Custom



**DUAL BOTTLE OPENER**

CODE: BA-O14



ABS (Acrylonitrile Butadiene Styrene)  
Red, Blue, White



**SIMPLE COASTER**

CODE: BA-C15



AS (Acrylonitrile Styrene)  
Transparent Red, Transparent Blue, Clear



**ROX**

CODE: G-01



BPA free Acrylic  
Amber, Green, Blue, Red





**COLLINS**

CODE: G-02



BPA free Acrylic  
Red, Amber, Green, Blue



**BRUSKI**

CODE: G-03



BPA free Acrylic  
Red, Amber, Green, Blue



**CHEERS**

CODE: G-04



BPA free Acrylic  
Blue, Green, Red, Amber



**SHOT GLASS**

CODE: G-05



BPA free Styrene  
Red, Orange, Yellow, Blue, Purple, Clear



# ALTA TRITAN WATER BOTTLE

CODE: BT-T17

- ▶ 700ml water bottle made of BPA free Tritan™ FDA compliant material
- ▶ A flip top, drink through lid with an urban inspired design
- ▶ Combine bottle and sleeve colours to create a bottle that is uniquely yours
- ▶ Size: 267Hx70D mm



**BPA free** - 700ml Tritan material highest quality copolyester BPA free! It is highly durable and has no taste or smell transfer

**Comfort** - 3mm thick Neoprene Sleeve Wrap, keeps your hands dry and the drink cool !



**Simplicity** - Detailed photo instruction card included with each bottle to illustrate care and operating features

# TAKEOUT TUMBLER



CODE: TB-D02

- ▶ 470ml
- ▶ BPA & Phthalate free
- ▶ Choose from dome lid or flat lid option
- ▶ Includes straw with safety cap
- ▶ Double-wall insulated to keep drinks COLD longer
- ▶ Top rack dishwasher safe
- ▶ Snap-on flexible lid with tab for easy removal
- ▶ Dome lid available at no extra charge specify on order
- ▶ Full wrap-around graphics
- ▶ Size: 165Hx95W mm



# HOLLYWOOD GLITTER TUMBLER



CODE: TB-D10

- ▶ BPA free
- ▶ A double wall acrylic construction
- ▶ Screw on plastic flip-up lid and spill resistant lid
- ▶ Top rack dishwasher safe
- ▶ Add your custom insert imprint
- ▶ Size: 216Hx70D mm



BLUE STAR



CHEETAH



GOLD CIRCLE



GREEN ICE



BLUE ICE



BRONZE ICE



BROWN ICE



BLUE DIAMOND



PINK DIAMOND



RED DIAMOND



PINK ICE



PURPLE ICE



PEACH ICE



GOLD ICE

# SANTANA TUMBLER



CODE: TB-D25

- ▶ Stainless Steel
- ▶ BPA free
- ▶ 470ml double walled stainless steel tumbler with clear acrylic window
- ▶ Screw on spill proof lid (Patent #7,556,425 B2)
- ▶ Clear acrylic window showcases your custom designs by using patented heat-changing technology or use paper insert instead
- ▶ Gift box included
- ▶ Size: 216Hx76D mm



# EMPIRE



CODE: TB-M30

- ▶ Stainless Steel
- ▶ BPA free
- ▶ Stain finish 18/8 vacuum sealed 470ml stainless steel tumbler
- ▶ Spill proof screw on lid with push button open/close function
- ▶ 360 degree drinkability plus a tea hook
- ▶ Top rack dishwasher safe
- ▶ Gift box included
- ▶ Size: 216Hx95D mm



BLACK



RED



SILVER



# WINE AERATOR



CODE: BA-06

- ▶ When you don't have time to wait for your wine to aerate, this innovative wine accessory will be most welcome
- ▶ Designed to enhance the smell and flavour of any wine, the wine aerator comes with easy to clean parts
- ▶ Simply pour your wine into the top, it will aerate then flow out the bottom into your glass
- ▶ Gift box included
- ▶ Size: 146Hx63D mm



# WRITING INSTRUMENT





## OXFORD PEN

CODE: PP-01



Plastic

Blue, Orange, Red, Blue/Silver,  
Orange/Silver, Red/Silver



## YALE PEN

CODE: PP-02



Plastic

Black, H.pink, Blue, Green



## STANFORD PEN

CODE: PP-03



Plastic

Black, Blue, Orange, Red



## DUKE PEN

CODE: PP-04



Plastic

Blue, Red, Black, Black/Silver, Red/Silver,  
Blue/Silver, Green/Silver



## DEAKIN PEN

CODE: PP-05



Plastic

Red, Blue, White



## MONASH PEN

CODE: PP-06



Plastic

Red, Green, Blue, White, Yellow, Orange,  
Black



## CORNELL PEN

CODE: PP-07



Plastic

Red/Silver, Black/Silver, Blue/Silver



## TRINITY PEN

CODE: PP-08



Plastic

Blue, Red, Green, Black



## DURHAM PEN

CODE: PP-09



Plastic  
Black, Blue, Red



## ETON PEN

CODE: PP-10



Plastic  
Blue, Red



## BOSTON PEN

CODE: PP-11



Plastic  
Black/Silver, Blue/Silver, Red/Silver



## PRINCETON PEN

CODE: PP-12

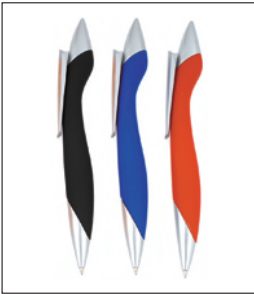


Plastic  
Red, Black, Orange, Blue, Black/White,  
Black/Red, Black/Silver, Red/Silver, Blue/Silver



## HARVARD PEN

CODE: PP-13



Plastic  
Black, Blue, Red



## CAMBRIDGE PEN

CODE: PP-14



Plastic  
Red/Silver, Blue/Silver



## COLUMBIAPEN

CODE: PP-15



Plastic  
Sky Blue, Blue, Black, Green, Red, Orange



## PURDUE PEN

CODE: PP-16



Plastic  
Blue



## FLINDERS PEN

CODE: PP-17



Plastic  
White/Blue



## DARTMOUTH PEN

CODE: PP-18



Plastic  
Red, Blue, Silver



## SURREY PEN

CODE: PP-19



Plastic  
White/Red



## YORK PEN

CODE: PP-20



Plastic  
Blue, Red, Black, Silver



## LAVAL PEN

CODE: PP-21



Plastic  
White/Orange



## FUDAN PEN

CODE: PP-22



Plastic  
Blue/Silver, Red/Silver, Red, Blue, Black



## GEORGETOWN PEN

CODE: PP-23



Plastic  
Black/Silver, Blue/Silver, Red/Silver



## HOGWARTS PEN

CODE: PP-24



Plastic  
Blue



## DREXEL PEN

CODE: PP-25



Plastic  
White



## CARLETON PEN

CODE: PP-26



Plastic  
Green



## CALTECH PEN

CODE: PP-27



Plastic  
Orange



## PORTLAND PEN

CODE: PP-28



Plastic  
Silver/Red



## TIFFIN PEN

CODE: PP-29



Plastic  
Red/Silver, Blue/Silver, Black/Silver



## LATROBE PEN

CODE: PP-30



Plastic  
Red, Green, Blue, Black, Orange



## BREWSTER PEN

CODE: PP-32



Plastic  
Metallic Purple, Metallic Blue, Metallic Red,  
Metallic Green, Metallic Silver



## HIGH FIVE HAND PEN

CODE: PP-33



Plastic  
Neon Red, Neon Green, Neon Blue



## SILVER CUCURBIT PEN

CODE: PP-34



ABS (Acrylonitrile Butadiene Styrene)

Silver/Green, Silver/Black, Silver/Blue, Silver/Red



## WAVE PEN

CODE: PP-35



ABS (Acrylonitrile Butadiene Styrene)

Pearlised Silver, White



## TAPE MEASURE PEN

CODE: PP-36



ABS (Acrylonitrile Butadiene Styrene)

Transparent Red, Transparent Blue



## GEL INK PEN

CODE: PP-37



ABS (Acrylonitrile Butadiene Styrene)

Black/Silver



## CEO PEN

CODE: PP-38



ABS (Acrylonitrile Butadiene Styrene)

Black, Red, Blue



## STRIPE PEN

CODE: PP-39



ABS (Acrylonitrile Butadiene Styrene)

Red, Blue, Green, Black



## ALPHA PEN

CODE: MP-01



Metal

Silver



## GAMMA PEN

CODE: MP-02



Metal

Black



## OMEGA PEN

CODE: MP-03



Metal  
Black, Red, Blue, Silver



## EPSILON PEN

CODE: MP-04



Metal  
Black, Blue, Silver, Red



## ECO-PEN

CODE: EP-01

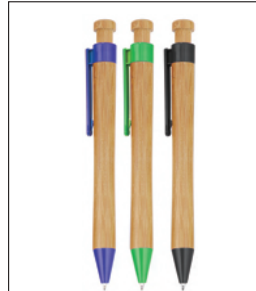


Recycled paper with wooden clip  
Black, Blue, Green



## BAMBOO PEN

CODE: EP-02

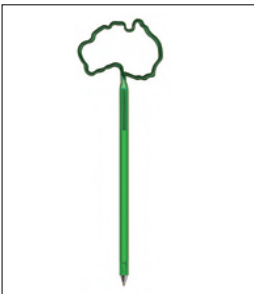


Biodegradable PLA pen with bamboo barrel  
Blue, Green, Black



## INKBEND STANDARD BASIC SHAPE

CODE: NP-01



Plastic  
22 rod colours available



## INKBEND STANDARD WITH CUSTOM BILLBOARD

CODE: NP-02



Plastic  
22 rod colours available



## SOFT TOP GRIP PEN

CODE: NP-03



Plastic  
Blue, Green, Scarlet



## FLASH LIGHT UP PEN

CODE: NP-04



Plastic  
Blue, Green, Lime, Orange, Purple, Scarlet



## STARLIGHT PEN

CODE: NP-05



Plastic  
Blue, Scarlet



## PEN & MINI POT

CODE: NP-06



Recycled plastic  
White, Orange, Green



## FLOWER HIGHLIGHTER

CODE: HL-01



Polypropylene  
Clear Frost



## 4 IN 1 PEN SET

CODE: HL-02



ABS (Acrylonitrile Butadiene Styrene)  
White/Grey



## GEL HIGHLIGHTER SET

CODE: HL-03



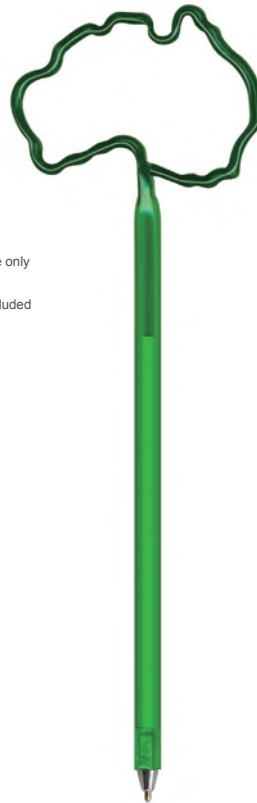
ABS (Acrylonitrile Butadiene Styrene)  
White/Blue



# INKBEND STANDARD BASIC SHAPE

CODE: NP-01

- ▶ Ultra high gloss tube
- ▶ Full sized ball point pen bent into one of many hundreds of available shapes
- ▶ Available in a variety of opaque and transparent colours
- ▶ Custom barrel imprint and multi-colour printed top
- ▶ Size: 210mm long



Standard rod colours



## NP-01 SHAPE LIST

- ▲ Reference shape only
- Multi-colour
- ★ Bill board not included



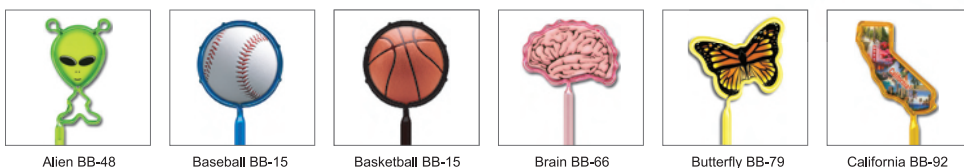
# INKBEND STANDARD WITH CUSTOM BILLBOARD

CODE: NP-02

- ▶ Ultra high gloss tube
- ▶ Full sized ball point pen bent into one of many available shapes
- ▶ Available in a variety of opaque and transparent colours
- ▶ Custom barrel imprint and multi-colour printed top
- ▶ Print on both sides
- ▶ 210mm long



## NP-02 SHAPE LIST



Alien BB-48

Baseball BB-15

Basketball BB-15

Brain BB-66

Butterfly BB-79

California BB-92



# OFFICE & BUSINESS



**PLASTIC COVER NOTEBOOK WITH PEN**

CODE: NB-01



ABS (Acrylonitrile Butadiene Styrene)

Clear, Black, Royal, Red



**CAR MEMO PAD WITH PEN**

CODE: NB-02



ABS (Acrylonitrile Butadiene Styrene)

White, Black, Royal, Red, Orange



**ECO-BOOK B5**

CODE: NB-E03



Recycled paper

Black/Natural



**ECO-BOOK A5**

CODE: NB-E04



Recycled paper

Black/Natural



**ECO-NOTE**

CODE: NB-E05



Recycled paper

Black/Natural



**B6 ECO NOTEBOOK WITH PEN**

CODE: NB-E06



Cover: 700gsm cardboard

Natural/Black, Natural/Royal, Natural/Red



**A6 ECO NOTEBOOK**

CODE: NB-E07



Cover: Bond paper

Black/Natural, Royal/Natural, Red/Natural, Natural/Natural



**ECO-STICKY**

CODE: NB-S08



Recycled paper

Natural



**FLAG TAG RECTANGLE**

CODE: NB-E09



Recycled Paper  
White, Natural



**FLAG TAG SQUARE**

CODE: NB-E10



Recycled Paper  
White, Natural



**ALL IN ONE RECYCLED JOURNAL**

CODE: NB-E11



Recycled Paper  
Natural



**BEECH RECYCLED NOTEBOOK**

CODE: NB-E12



Recycled Paper  
Natural, White



**CLEO VINYL JOURNAL**

CODE: NB-13



Vinyl  
Black, Red, Royal



**A6 NOTEBOOK**

CODE: NB-14



Polypropylene  
Transparent Red, Transparent Blue, Clear



**A5 NOTEBOOK WITH PEN**

CODE: NB-15



Polypropylene  
Silver



**POCKET NOTEBOOK**

CODE: NB-16



Polypropylene  
Transparent Red, Transparent Blue, White



**RECYCLED NOTEBOOK**

CODE: NB-E17



Recycled Paper  
Natural



**ECO-FRIENDLY NOTEBOOK**

CODE: NB-E18



Recycled Paper  
Red, Blue, Black



**RECYCLED STONE PAPER NOTEBOOK**

CODE: NB-E19



Recycled Paper  
Natural



**A4 NOTEBOOK**

CODE: NB-20



Polypropylene  
Transparent Red, Transparent Blue, Clear



**A5 NOTEBOOK**

CODE: NB-21



Polypropylene  
Transparent Red, Transparent Blue, Clear



**PU NOTEBOOK**

CODE: NB-22



Polyurethane  
Red, Black, Blue



**7 COLOUR STICKY NOTES**

CODE: NB-S23



ABS (Acrylonitrile Butadiene Styrene)  
White



**MULTI-FUNCTIONAL STICKY HOLDER**

CODE: NB-S24



Polystyrene Plastic  
Transparent Red, Transparent Blue



**SPIRAL STICKY NOTE**

CODE: NB-S25



Polypropylene  
Silver



**MEMO HOLDER**

CODE: NB-26



Polyurethane  
Black



**3 IN 1 STICKY NOTES HOLDER**

CODE: NB-S27



ABS (Acrylonitrile Butadiene Styrene)  
White



**MEMO HOLDER WITH CALENDAR**

CODE: NB-28



Polyurethane  
Black



**MINI STICKY NOTES**

CODE: NB-29



ABS (Acrylonitrile Butadiene Styrene)  
Transparent Red, Transparent Blue



**RECYCLED STICKY NOTEPAD**

CODE: NB-E30



Paper  
Black



**BAND BUDDY**

CODE: OA-01



TPE  
Black, Blue, Red, White



**PEN POCKET**

CODE: OA-02



ABS plastic  
Black, Red, Green, Blue, White



**CORD CALLER**

CODE: OA-03



Durable material  
Green, Yellow, Red, White, Blue



**SLIM CARD HOLDER**

CODE: OA-H04

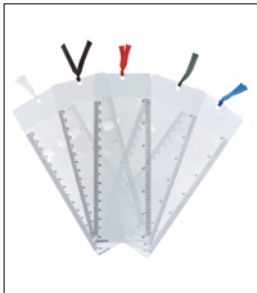


Metal  
Silver



**BOOK MARK MAGNIFIER**

CODE: OA-M06



Plastic  
White, Black, Red, Green, Blue



**CREDIT CARD MAGNIFIER**

CODE: OA-M07



Plastic  
Red, Black, White, Blue



**MAGNETIC DRY ERASER**

CODE: OA-08



Magnet  
Yellow, Green, Red, Blue



**DELUXE PHOTO BOOK MARK**

CODE: OA-B09



PU  
Blue, Red, Black, Light Blue,  
Light Green, Light Orange,  
Light Pink, White



**CLEARLINE RULER**

CODE: OA-S11



PLA  
Transparent



**LET-JET LETTER OPENER**

CODE: OA-12



Plastic  
Translucent Blue, Recycled Black,  
White, Translucent Green



**HEART LETTER OPENER**

CODE: OA-13



Impact Styrene  
Red, White



**ACROBAT CLIPS**

CODE: OA-C14



Magnet  
Multi Coloured



**STARSKY CLIPS**

CODE: OA-C15



Magnet  
Silver/Black



**PEOPLE CLIPS**

CODE: OA-C16



Acrylic  
Multi Coloured



**FLEXIBLE RULER**

CODE: OA-S17



PVC  
Clear, Translucent Red, Translucent Yellow,  
Translucent Green, Translucent Blue,  
Translucent Purple



**CUSTOM RULER**

CODE: OA-S18



PC  
Clear



**PENCIL SHAPED SHARPENER**

CODE: OA-S19



Plastic  
Black, White, Yellow, Blue, Red



**HEART SHAPED PAPER CLIPS & CASE**

CODE: OA-C20



Plastic  
Frosted Case/Red Clips



**DOG BONE SHAPED PAPER CLIPS & CASE**

CODE: OA-C21



Plastic  
Frosted Case/Assorted Coloured Clips



**GIANT PAPER CLIP**

CODE: OA-C22



Plastic  
Red, Green, Blue, White



**SPORTS CLIP BASKETBALL**

CODE: OA-C23



Resin polymer  
Basketball



**SPORTS CLIP SOCCER**

CODE: OA-C24



Resin polymer  
Soccer



**SPORTS CLIP GOLF**

CODE: OA-C25



Resin polymer  
Golf



**SPORTS CLIP BASEBALL**

CODE: OA-C26



Resin polymer  
Baseball



**MAGNETIC MEMO BOARD WITH PEN**

CODE: OA-27



12pt laminated paper  
Custom design



**SMALL MAGNETIC CORK BOARD**

CODE: OA-28



Cork/magnet  
Cork





**LARGE MAGNETIC CORK BOARD**

CODE: OA-29



Cork/magnet

Custom design



**MAGNETIC CORK MEMO BOARD**

CODE: OA-30



12pt paper laminated/Magnet/Cork

Custom design



**MAGNIFYING BOOKMARK**

CODE: OA-M31



PVC (Polyvinyl Chloride)

White



**CREDIT CARD MAGNIFIER**

CODE: OA-M32



PVC (Polyvinyl Chloride)

White



**MAGNIFYING RULER**

CODE: OA-M33



PS (Polystyrene Plastic)

Clear



**MINI CUBE HOLDER**

CODE: OA-H34



ABS (Acrylonitrile Butadiene Styrene)

White/Red, White/Blue



**BIG MAGNIFIER BOOKMARK**

CODE: OA-M35



PVC (Polyvinyl Chloride)

White



**A4 FILE HOLDER**

CODE: OA-S36



Polypropylene

Red, Blue, Green



**A4 PVC FILE BAG**

CODE: OA-S37



PVC (Polyvinyl Chloride)  
Red, Blue, Yellow



**BUSINESS CARD CASE**

CODE: OA-H38



Stainless Steel  
Stainless Steel/Black



**DELUXE CARD HOLDER**

CODE: OA-H39



PVC (Polyvinyl Chloride)  
Red, Blue, Black



**PENCIL CASE**

CODE: OA-S40



Nylon  
Blue, Red



**DIPLOMAT COMPENDIUM**

CODE: PF-01



Bonded leather  
Black



**ENVOY COMPENDIUM**

CODE: PF-02



Leather look PVC  
Black



**CONSUL COMPENDIUM**

CODE: PF-03



Microfibre & leather look PVC  
Black



**AMBASSADOR COMPENDIUM**

CODE: PF-04



Bonded Leather  
Black



**ROLLICK WRITING PAD**

CODE: PF-06



Neoprene  
Black, Red, Royal



**BANDED PADFOLIO**

CODE: PF-07



Simulated Leather  
Black, Red, Royal



**RETRACTABLE BADGE HOLDER**

CODE: TBH-01



Plastic/Metal  
Red, Black, Blue, White



**WHIRLBACK™ RETRACTABLE BADGE HOLDER**

CODE: TBH-02



Plastic  
Solid Black, Translucent Blue, Solid White



**ODYSSEY RETRACTABLE BADGE HOLDER**

CODE: TBH-03



Metal  
Translucent Smoke, Translucent Blue, Solid White



**PROVIDENCE RETRACTABLE BADGE HOLDER**

CODE: TBH-04



Plastic  
Black, Translucent Blue, White



**CIRCLE BADGE**

CODE: TBH-05



Metal  
Custom design



**OVAL BADGE**

CODE: TBH-06



Metal  
Custom design



**SQUARE BADGE**

CODE: TBH-07



Metal  
Custom design

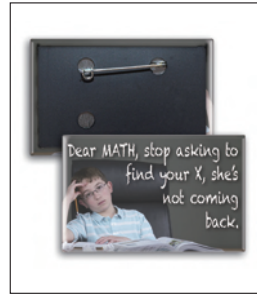


**RECTANGLE BADGE**

CODE: TBH-08



Metal  
Custom design



**RECYCLED PAPER EASEL FRAME**

CODE: FH-01



Eco-friendly paper  
Recycled Paper



**ALUMINIUM PHOTO FRAME**

CODE: FH-02



Aluminium  
Silver

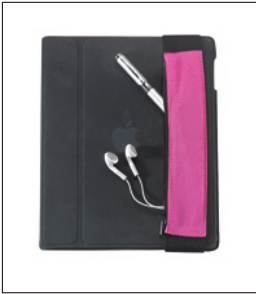


# IT . MOBILE & ELECTRONICS



**I BAND**

CODE: MA-01



Fabric

Green, Blue, Red, Yellow, Orange, Pink



**SLIM JIM**

CODE: MA-02



PC

White



**JASON PRO**

CODE: MA-03



Plastic

White



**I-PHONE USB CABLE**

CODE: MA-04



Plastic

White



**MOBILE PHONE BACKUP BATTERY**

CODE: MA-05



Plastic

White



**SQUARE SCREEN CLEANER**

CODE: MA-06



Microfibre

Black, White, Red, Blue



**IPAD FLIP COVER**

CODE: MC-C03



PU leather

Black



**PROP**

CODE: MC-H04



Non-skid material (TPE)

Black, Blue, Green, Red, White



**SOCKET POCKET**

CODE: MC-H05



Plastic  
Black, White



**TABLET POCKET**

CODE: MC-H06



Plastic  
Black, White



**STICKUM**

CODE: MC-H07



Silicone  
Black



**BLOB**

CODE: MC-H08



Silicone  
White



**SMARTPHONE SUCTION STAND WITH PACKAGING**

CODE: MC-H09



Silicone  
Red, Blue, White, Purple, Pink, Green



**MOBILE PHONE & TABLET STAND**

CODE: MC-H10



Rubber  
Black, White



**KIOLINK OMNISTAND 500U**

CODE: MC-H12



Hard plastic/Soft rubber  
Black



**KIOLINK OMNISTAND 700U**

CODE: MC-H14



Hard plastic/Soft rubber  
Black





**IPHONE 5 COVER**  
CODE: MC-C17



Thermoplastic polyurethane  
Black, White



**NEOPRENE TABLET SLEEVE**  
CODE: MC-C18



Neoprene  
Pink, Lime, Yellow, Black, Purple, Blue, Red



**IPAD BLUETOOTH CASE**  
CODE: MC-C19



Synthetic Leather  
Black



**IPAD ARTISAN LEATHER BLUETOOTH CASE**  
CODE: MC-C20



Genuine leather  
Black



**SIMPLE MOBILE HOLDER**  
CODE: MC-H21



ABS (Acrylonitrile Butadiene Styrene)  
Blue, Red, Lime Green, Black



**MOBILE PHONE STAND**  
CODE: MC-H22



Silicone Dioxide  
Red, Blue, Black, Green, White



**SILICONE MOBILE POCKET**  
CODE: MC-H23



Silicone  
Red, Blue, Black, White, Yellow, Lime Green



**MILAN**  
CODE: MC-H30



Leatherette  
Black





**COMPUTER DUST BRUSH**

CODE: CA-01



Plastic  
White



**HEADPHONE HUGGER**

CODE: CA-02



TPE  
Red, Blue, White, Black, Green



**TIE-LINE CLOSURES 3"**

CODE: CA-03

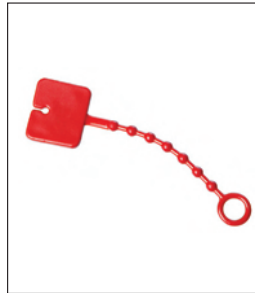


TPE  
Black, Blue, Red, White, Green



**TIE-LINE CLOSURES 5"**

CODE: CA-04



TPE  
Black, Blue, Red, White, Green



**CORD CRADLE**

CODE: CA-05

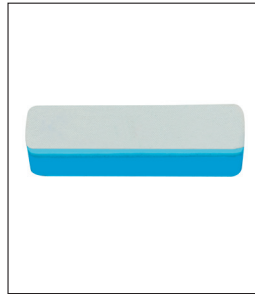


TPE  
Black, Blue, Red, White, Green



**STICKY SCREEN CLEANER**

CODE: CA-06



Silicone  
Blue



**LAPTOP FELT SLEEVE CASE**

CODE: CA-S08



Felt  
Black/Green



**BUSINESS LAPTOP FELT SLEEVE CASE**

CODE: CA-S09



Felt/PU  
Gray/Black



**RECTANGLE MOUSE MAT**

CODE: CA-P10



Polyester  
Custom design



**ROUND MOUSE MAT**

CODE: CA-P11



Polyester  
Custom design



**PAW PRINT MOUSE MAT**

CODE: CA-P12



Polyester  
Custom design



**OVAL MOUSE MAT**

CODE: CA-P13



Polyester  
Custom design



**FOLDING BLUETOOTH KEYBOARD**

CODE: CA-14



Plastic  
Black



**BLUETOOTH KEYBOARD**

CODE: CA-15



Silicone  
Black



**MICROFIBRE CLOTH**

CODE: CA-16



Microfibre  
Custom design



**MACRO CLEANER**

CODE: CA-17



Microfibre  
Custom design



**MICRO CLEANER**

CODE: CA-18



Microfibre  
White



**CRAFT MOUSE PAD**

CODE: CA-P19



Rubber  
White



**SD/XD MEMORY CARD HOLDER**

CODE: CA-20



Plastic  
Frosted White



**CIRCULAR MOUSE PAD**

CODE: CA-P21



Plastic  
Custom colour



**RECTANGULAR MOUSE PAD**

CODE: CA-P22



Plastic  
Custom colour



**CALENDAR MOUSE PAD**

CODE: CA-P23



Plastic  
Custom colour



**MULTIFUNCTIONAL COMPUTER BRUSH**

CODE: CA-24



ABS (Acrylonitrile Butadiene Styrene)  
Silver/Smoky



**MOUSE PAD**

CODE: CA-P25



Polyester  
Red, Blue, Black



**CARD READER**

CODE: CA-26



PS (Polystyrene Plastic)  
Transparent Red, Transparent Blue,  
Transparent Black



**WILLOW LEAF STYLUS**

CODE: STY-01



Silicone  
Blue, Red, Silver



**HIGH SENSITIVITY STYLUS PEN**

CODE: STY-02



Copper/Silicone  
Black, Silver



**STILO STYLUS WITH PEN**

CODE: STY-P03



Plastic/Rubber  
Blue, White, Silver



**TECHTIP STYLUS AND SCREEN CLEANER**

CODE: STY-04



Plastic  
Blue, Red, Silver, Green



**MINI STYLUS**

CODE: STY-05



ABS (Acrylonitrile Butadiene  
Styrene)  
Black, Red, Blue, Silver



**CUCURBIT STYLUS PEN**

CODE: STY-P06



ABS (Acrylonitrile Butadiene  
Styrene)  
Red, Blue, Green, Black, Silver



**EARPHONES PACK**

CODE: HE-01



Hard plastic  
White/Clear



**MINI RETRACTABLE EARPHONES**

CODE: HE-02



Hard plastic  
White



**EARBUDS WITH PROTECTIVE CASE**

CODE: HE-04



Hard plastic  
White



**RETRACTABLE EARBUDS**

CODE: HE-05



Hard plastic  
White



**EARBUDS**

CODE: HE-06



Hard plastic  
White



**PORTABLE EARBUDS**

CODE: HE-07



PS (Polystyrene Plastic)  
White



**EARBUDS IN CASE**

CODE: HE-08



ABS (Acrylonitrile Butadiene Styrene)  
White



**USB CAR CHARGER**

CODE: CH-01



ABS (Acrylonitrile Butadiene Styrene)  
White, Black



**USB CAR ADAPTOR**

CODE: CH-02



ABS (Acrylonitrile Butadiene Styrene)  
Camo, Black, White, Blue, Red, Pink, Gray, Lime, Orange, Purple, Yellow



**SOLAR CHARGER PACK**

CODE: CH-03



Recycled nylon  
Gray, Red



**SOLAR CHARGER WITH SPEAKERS**

CODE: CH-04



Metal/Nylon  
Red, Gray



**DOUBLE USB CAR CHARGER**

CODE: CH-05



ABS (Acrylonitrile Butadiene Styrene)  
White/Red, White/Blue, White/Green



**BULLET CAR CHARGER**

CODE: CH-06



ABS (Acrylonitrile Butadiene Styrene)  
Blue, Black, White



**MINI CUBE SPEAKER**

CODE: SPK-01



Aluminium  
Matt Black, Gloss White



**PORTABLE MINI SPEAKER**

CODE: SPK-02



Metal  
White, Black



**AMP IT UP SPEAKERS**

CODE: SPK-03



Metal  
Blue, Green, Black



**BLUETOOTH MULTIPURPOSE SPEAKER**

CODE: SPK-04



Metal  
Purple, Silver, Green, Red, Black, Blue



MINI MP3 SPEAKERS

CODE: SPK-05



Metal  
Black, White



TRAVEL SPEAKERS

CODE: SPK-06



Metal  
Silver



BLUETOOTH SPEAKER

CODE: SPK-07



Metal  
White



COLOUR ME SPEAKER

CODE: SPK-08



Metal  
White



TWIGGY SPEAKER

CODE: SPK-09



Metal  
White



SPEAKERS IN A BOX

CODE: SPK-10



Cardboard  
Custom design



SPEAKERS IN A BOX

CODE: SPK-11



Cardboard  
Custom design



GLOW HUB

CODE: UH-01



Metal  
White/Black





**FLOWER POWER**

CODE: UH-02



Plastic  
Multi Coloured



**PUZZLE HUB**

CODE: UH-03



Plastic  
Multi Coloured



**SWIVEL USB**

CODE: UFD-01



Metal/ABS  
Black, Blue, Green, Purple, Red, Orange,  
Yellow, White



**USB**

CODE: UFD-02



Metal  
Silver, Custom colour



**METAL KEY USB**

CODE: UFD-03



Metal  
Silver, Custom colour



**MINI SWIVEL USB**

CODE: UFD-04



Metal  
Silver



**CREDIT CARD USB**

CODE: UFD-05



ABS  
Custom Colour



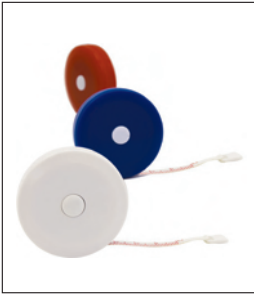




**TOOLS & AUTO**

**SNAP IT TAPE MEASURE**

CODE: TM-01



Vinyl  
Red, Royal, White



**AUTO STOP TAPE MEASURE**

CODE: TM-02



ABS + Steel  
Silver



**CONSTRUCTION PRO 90CM TAPE MEASURE**

CODE: TM-03



Polystyrene Rubber  
Yellow/Black



**CONSTRUCTION PRO 305CM TAPE MEASURE**

CODE: TM-04



Impact Styrene  
White/Blue, Yellow/Black, White/Black



**STANDARD TAPE MEASURE**

CODE: TM-05



Metal belt  
White



**LEVEL TAPE MEASURE**

CODE: TM-06



Metal belt  
White



**DELUXE TAPE MEASURE**

CODE: TM-07



Metal belt  
Black/Yellow



**COMMA SHAPE TAPE MEASURE WITH PEN**

CODE: TM-08



ABS (Acrylonitrile Butadiene Styrene)  
White



**LOCKING TAPE MEASURE**

CODE: TM-09



ABS (Acrylonitrile Butadiene Styrene)

White/Black



**IPOD SHAPED TAPE MEASURE**

CODE: TM-10



ABS (Acrylonitrile Butadiene Styrene)

Red, Blue



**SMASHLIGHT® ELIANA™ BLACK & WHITE**

CODE: TF-F01



Soft flexible vinyl+magnet

Custom imprint design



**SMASHLIGHT® ELIANA™ PINK**

CODE: TF-F02



Soft flexible vinyl+magnet

Pink



**SMASHLIGHT® ELIANA™ CUSTOM COLOUR**

CODE: TF-F03



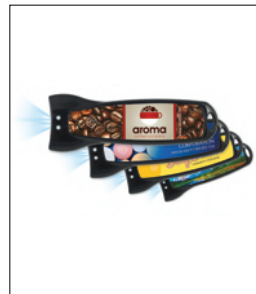
ABS+Magnet+LED

Custom design



**SMASHLIGHT® THOMAS™**

CODE: TF-F04



ABS+Magnet

Custom imprint design



**SMASHLIGHT® MESSENGER™**

CODE: TF-F05



ABS+Magnet

Custom imprint design



**SMASHLIGHT® ELIANA® CUSTOM SHAPES**

CODE: TF-F22



Vinyl/Magnet

Custom design



**FLAT TUBE - MAILER OR PRESENTATION**

CODE: TF-M23



Cardboard  
Custom design



**SMASHLIGHT® NOAH™**

CODE: TF-F06



ABS+Magnet  
Custom imprint design



**SHAPELIGHTS™**

CODE: TF-F24



Soft foam/PVC  
7 stock shapes with custom colour



**STUBBY FLASHLIGHT**

CODE: TF-F07



Metal  
Purple, Green, Brown, Orange, Blue, Red, Light Green, Black, Silver, Pink, Light Blue, Gold



**THE TORCH FLASHLIGHT**

CODE: TF-T08



Metal  
Black, Red, Gunmetal Gray, Blue



**TORCH KEYLIGHT**

CODE: TF-T09



Metal  
Green, Gray, Pink, Blue, Red, Black



**PALM FLASHLIGHT**

CODE: TF-F12



Metal  
Blue, Silver, Red



**14 LED DURA-LIGHT**

CODE: TF-T13



Metal  
Blue, Gray, Red, Black



**CONTOUR FLASHLIGHT**

CODE: TF-F14



Metal

Red, Silver, Pink, Blue



**28 LED DAYLIGHT**

CODE: TF-T15



Metal

Silver/Red, Silver/Blue, Black/Red, Black/Blue



**BARREL STUBBY FLASHLIGHT**

CODE: TF-F16



Metal

Silver/Blue, Silver/Red, Silver/Black, Silver/Green



**TUBE UMBRELLA FLASHLIGHT**

CODE: TF-F17



Plastic

Blue, Black



**BIKE SAFETY LIGHT**

CODE: TF-T18



Rubber

Black



**MAGNETIC EMERGENCY LIGHT**

CODE: TF-T10



Neodymium magnet

Black



**RAIN OR SHINE LIGHT**

CODE: TF-F11



Plastic

Blue, Black, Pink



**DARK ROOM USB BOOK LIGHT**

CODE: TF-F21



Aluminum

Blue, Black, Red, Silver



**HI POWER MAGNETIC EMERGENCY LIGHT**

CODE: TF-T25



Metal  
Gunmetal Gray



**RED MAGNETIC EMERGENCY LIGHT**

CODE: TF-T26



Metal  
Black



**GIANT CONTOUR FLASHLIGHT**

CODE: TF-F27



Metal  
Red, Blue



**LED CLIP LIGHT**

CODE: TF-T28



Metal  
Gunmetal Gray, Blue



**TACTICAL FLASHLIGHT**

CODE: TF-F29



Metal  
Black



**ZOOM FLASHLIGHT**

CODE: TF-F30



Metal  
Black, Red, Blue



**BOTTLE OPENER FLASHLIGHT**

CODE: TF-F31



Metal  
Blue, Red



**PULLER FLASHLIGHT**

CODE: TF-F32



Metal  
Black, Red, Blue



**UNO LED ALUMINIUM TORCH**

CODE: TF-T33



Metal  
Black



**5 LED FLASHLIGHT**

CODE: TF-F34



Aluminium  
Red, Blue, Black



**CLASSIC KEYRING**

CODE: KR-M01



Chrome finish  
Chrome



**OVAL KEYRING**

CODE: KR-M02



Chrome finish  
Chrome



**GOLFER KEYRING**

CODE: KR-M03



Chrome finish  
Chrome



**CAR KEYRING**

CODE: KR-M04



Matt chrome  
Chrome



**ELLIPTIC KEYRING**

CODE: KR-M05



Matt chrome/PVC  
Black, Blue, Red



**PHOTO KEYRING**

CODE: KR-M06



Chrome/Magnetic closure  
Blue



**SECRET KEYRING**

CODE: KR-M07



Chrome finish  
Chrome



**HOME KEYRING**

CODE: KR-M08



Chrome finish  
Chrome



**BOTTLE AND CAN OPENER KEYRING**

CODE: KR-M09



Metal  
Chrome



**LEATHER STRAP KEYRING**

CODE: KR-M11



Metal  
Chrome/Black



**BOTTLE OPENER KEYRING**

CODE: KR-M10



Metal  
Black, Gold, Green, Purple



**HOUSE KEYRING**

CODE: KR-M14



Satin chrome  
Chrome



**BAND KEYRING**

CODE: KR-M15



Chrome  
Chrome/Black



**WEB KEYRING**

CODE: KR-M16



Chrome  
Black, Red, Blue





**T SHIRT KEYRING**

CODE: KR-M18



Metal/Foam

White, Blue, Red



**JESSE KEY LIGHT**

CODE: KR-F19



ABS+Magnet

Black



**FLIP FLOP KEYTAG**

CODE: KR-20



PVC

White, Red, Blue



**LIGHT UP NATURAL GAS FLAME KEYTAG**

CODE: KR-F21



Chrome finish

Chrome



**LIGHT UP LIGHT BULB KEYTAG**

CODE: KR-F22



ABS

White



**LIGHT UP PIGGY KEYTAG**

CODE: KR-F23



ABS

Pink, Red, Blue



**LIGHT UP HARD HAT KEYTAG**

CODE: KR-F24



ABS

White, Yellow



**LIGHT UP SAFETY CONE KEYTAG**

CODE: KR-F25



ABS

Orange



**KEYLIGHT RECTANGLE**

CODE: KR-F26



Metal

Black, Silver, Purple, Orange, Pink, Blue, Green, Red, White



**KEYLIGHT HOUSE**

CODE: KR-27



Plastic

Yellow, Green, Purple, Red, White



**LED FISHEYE KEY LIGHT**

CODE: KR-F28



Plastic

Translucent Blue, Gold, Translucent Purple, Translucent Red, Translucent Green



**DAYLIGHTER KEYLIGHT**

CODE: KR-F30



Metal

Gunmetal/Black, Gunmetal/Red, Gunmetal/Blue



**GUITAR KEYLIGHT**

CODE: KR-F31



Plastic

White, Blue, Red



**WHISTLE KEYLIGHT**

CODE: KR-F32



Plastic

Black, Pink, Translucent Blue, Translucent Green, Translucent Purple, Translucent Red



**CAR KEYLIGHT**

CODE: KR-F33



Plastic

Translucent Blue, Translucent Red, White



**KEYLIGHT BOTTLE OPENER**

CODE: KR-F34



Metal

Black, Red, Blue



**GUITAR BOTTLE OPENER KEYRING**

CODE: KR-M35



Metal

Red, Blue, Black



**LED KEYRING WITH BOTTLE OPENER**

CODE: KR-F36



Metal/LED light

White, Black, Purple, Blue, Green, Red



**KEYRING BOTTLE OPENER**

CODE: KR-37



Plastic

Red, Black, Blue, Pink, White



**RIBBON KEYTAG**

CODE: KR-38



Plastic

Clear, Translucent Pink, Translucent Yellow



**KEYLIGHT BOTTLE OPENER 2**

CODE: KR-F39



ABS (Acrylonitrile Butadiene Styrene)

Red, Blue



**ROUND KEYLIGHT**

CODE: KR-F40



ABS (Acrylonitrile Butadiene Styrene)

Silver, Transparent Red, Transparent Blue



**MINI TORCH KEYCHAIN**

CODE: KR-F41



Aluminium

Silver/Blue



**RECTANGLE KEYLIGHT**

CODE: KR-F42



ABS (Acrylonitrile Butadiene Styrene)

Silver, Transparent Red, Transparent Blue



**KEYLIGHT MINI PEN**

CODE: KR-F43



ABS (Acrylonitrile Butadiene Styrene)

Red, Blue, Black



**ROUND KEYTAG**

CODE: KR-44



Metal

Red, Blue



**GLASSES CLEANER KEYRING**

CODE: KR-45



ABS (Acrylonitrile Butadiene Styrene)

White/Black



**EXPANDABLE CAR ORGANIZER**

CODE: AA-01



Laminated non-woven polypropylene

Blue/Black, Silver/Black



**FOUR SEASON ICE SCRAPER & SQUEEGEE**

CODE: AA-02



ABS

White



**LIGHT SCRAPER**

CODE: AA-03



ABS

Black



**TYRE PRESSURE GAUGE**

CODE: AA-04



Metal

Black/Silver



**SOCCER CAR SIGN MAGNET**

CODE: AA-05



Magnet

Custom design



**TENNIS CAR SIGN MAGNET**

CODE: AA-06



Magnet

Custom design



**BASKETBALL CAR SIGN MAGNET**

CODE: AA-07



Magnet

Custom design



**GOLF CAR SIGN MAGNET**

CODE: AA-08



Magnet

Custom design



**TYRE GAUGE KEYCHAIN**

CODE: AA-09



Alumina

Silver, Red, Blue



**TYRE GAUGE**

CODE: AA-10



Alumina

Silver, Red, Blue



**CAR SUN SHADE**

CODE: AA-11



Terylene/Cotton Cloth

Silver



**10 IN 1 SCREWDRIVER TOOL KIT**

CODE: TL-S01



ABS/Metal

Blue, Yellow, Red  
Black/Silver



**CAPTAINS TOOL SET**

CODE: TL-T03



Nylon/Metal

Black/Silver



**MARSHALLS TOOL SET**

CODE: TL-T05



Metal/Nylon



**8 TIP SCREWDRIVER**

CODE: TL-S04



Metal  
Blue, Red, Black



**HARDCASE 40 PIECE TOOL KIT**

CODE: TL-T02



Metal/Plastic  
Black



**6 IN 1 SCREWDRIVER SET**

CODE: TL-S06



ABS  
Black/Red



**12 IN 1 MULTI-FUNCTIONAL HAMMER**

CODE: TL-T07



Metal  
Silver



**FIX GRIP MULTITOOl**

CODE: TL-T08



Metal  
Silver



**17 IN 1 TOOL SET**

CODE: TL-T09



Metal  
Black



**EMERGENCY AUTO TOOL**

CODE: TL-T10



Metal  
Silver



**MANUAL AUTO EMERGENCY TOOLKIT**

CODE: TL-T11



ABS material  
Yellow



**FLASHLIGHT & SCREWDRIVER KIT**

CODE: TL-T12



Plastic  
Translucent Blue, Translucent Red



**DIGITAL MULTIFUNCTIONAL TOOLSET**

CODE: TL-T13



ABS+Stainless steel  
Black



**OUTDOOR KNIFE AND TORCH SET**

CODE: TL-T14



Metal  
Silver



**THE TOTAL PACKAGE TOOL SET**

CODE: TL-T15



Metal/Nylon  
Black



**GARDEN TOOL PACK**

CODE: TL-T16



Metal/Fabric pouch  
Dark Green/Natural



**DRIVER SET**

CODE: TL-S17



Metal  
Silver/Black



**BLUE MINI TOOL WITH POUCH**

CODE: TL-T18



Metal  
Silver/Blue



**6 IN 1 SCREWDRIVER**

CODE: TL-S19



Metal/Rubber/Hard Plastic  
Gray/Black



**BLADE RUNNER**

CODE: TL-K20



Plastic/Vinyl sleeve  
White



**BLADE RUNNER UTILITY**

CODE: TL-K21



Plastic/Vinyl sleeve  
White



**4 IN 1 MAGNETIC SCREWDRIVER SET**

CODE: TL-S22



Metal  
Silver/Translucent Blue



**TOOL AND KEYLIGHT SET**

CODE: TL-T23



Plastic  
Black/Silver



**25 PIECE TRIFOLD TOOL SET**

CODE: TL-T24



Metal  
Black/Silver



**RECTANGLE TOOL SET**

CODE: TL-T25



ABS (Acrylonitrile Butadiene Styrene)  
Transparent Red, Transparent Blue



**MULTIFUNCTIONAL TOOL KIT**

CODE: TL-T26



ABS (Acrylonitrile Butadiene Styrene)  
Silver/Black





SLIDE OUT TOOL KIT

CODE: TL-T27



ABS (Acrylonitrile Butadiene Styrene)

Red, Blue



PEN SCREWDRIVER

CODE: TL-S28



ABS (Acrylonitrile Butadiene Styrene)

Transparent Red, Transparent Blue



MULTI TOOL BOX

CODE: TL-T29



Tin

Silver



CLASSIC TOOL SET

CODE: TL-T30



PS (Polystyrene Plastic)

Black



MULTIPLIER

CODE: TL-T31



Aluminium

Silver



# BIKE SAFETY LIGHT



CODE: TF-T18

- ▶ Bike light allows you to keep a flashlight handy wherever you travel
- ▶ Other uses include clipping to the bar of a stroller, wheelchair or construction scaffolding
- ▶ Size: 95Hx25Wx25D mm

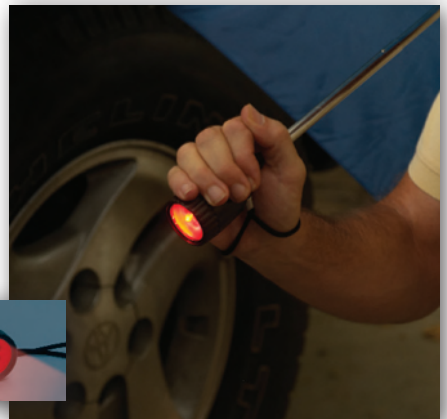


# RAIN OR SHINE LIGHT



CODE: TF-F11

- ▶ Umbrella with 6 LED lights in the handle
- ▶ 4 white lights for use as a flashlight and 2 red for emergency flashing
- ▶ Batteries included (2 x button cell CR1220-3V)
- ▶ Closed dimensions 26.6cm x 3.8cm diameter
- ▶ Open dimensions 59.6cm x 99cm diameter



# HI POWER MAGNETIC EMERGENCY LIGHT



CODE: TF-T25

- ▶ Metal
- ▶ Magnetic emergency light
- ▶ 1 watt brightness flashlight comes with 18 white LED bulbs on the side
- ▶ 9 red LED bulbs (6 on the side & 3 around the head) to make sure traffic can see you from multiple angles
- ▶ A super strong neodymium magnet holds it upright against a metal surface
- ▶ Gift box included
- ▶ Size: 229Lx44Wx44D mm



# LIGHT SCRAPER

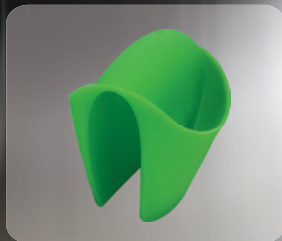


CODE: AA-03

- ▶ Even on the dark side, you can scrape your ice or bugs from the windshield with this 3 LED scraper to light the way
- ▶ Polybagged
- ▶ Size: 216Lx121Wx44D mm



# HOMEMWARE



**BAG CLIP**

CODE: CLP-01



Plastic  
Blue, Red, White



**MAGNETIC "RIP N CLIP" BAG CLIP**

CODE: CLP-02



Plastic  
Green, White, Blue, Red



**SUPER GATOR CLIP**

CODE: CLP-03



Plastic/Magnet  
Black



**SUPER CROC™ CLIP**

CODE: CLP-04



Plastic/Magnet  
Black



**MAGNETIC MEMO CLIP**

CODE: CLP-05



Plastic  
White/White, White/Black



**POWER CLIP**

CODE: CLP-06



Magnet  
More than 20 colours available



**POWER CLIP JUMBO**

CODE: CLP-07



ABS  
White/Blue, White/Red, Gray/Black, White/Black, Translucent Blue, Translucent Red, Translucent Green, Translucent Pink, Translucent Light Blue, Translucent Orange, Translucent Purple



**POWER CLIP HOUSE**

CODE: CLP-08



ABS  
White, Translucent Red, Translucent Blue



**POWER CLIP OVAL**

CODE: CLP-09



ABS plastic  
Translucent Blue, Translucent Green, Translucent Red



**POWER CLIP APPLE**

CODE: CLP-10



ABS plastic  
Translucent Green, Translucent Red, White/Black



**POWER CLIP STAR**

CODE: CLP-11



ABS plastic  
Translucent Red, Translucent Blue, Translucent Yellow



**POWER CLIP HEART**

CODE: CLP-12



ABS plastic  
White/Red, Red/Black



**POWER CLIP CAPSULE**

CODE: CLP-13



ABS plastic  
White/red, White/blue



**POWER PACK™ FOR SUPER GATOR® OR CROC™**

CODE: CLP-P14



Plastic  
Custom design



**RECTANGLE POWER CLIP**

CODE: CLP-15



ABS plastic  
White, Translucent Blue, Translucent Red



**GIANT POWER CLIP**

CODE: CLP-16



ABS plastic  
White, Translucent Red, Translucent Blue



**MAGNETIC RIBBON CLIP**

CODE: CLP-17



Plastic/Magnet  
Translucent Pink, White



**COFFEE SCOOP & CLIP**

CODE: CLP-18



Plastic  
Frost



**JUMBO CLIP**

CODE: CLP-20

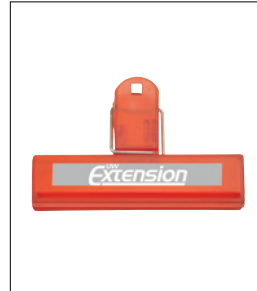


PS (Polystyrene Plastic)  
Solid White, Transparent Red,  
Transparent Blue



**MINI CHIP CLIP**

CODE: CLP-21



PS (Polystyrene Plastic)  
Solid White, Transparent Red,  
Transparent Blue



**CLOSURE CLIP**

CODE: CLP-22



ABS (Acrylonitrile Butadiene  
Styrene)  
White



**ROUND CLIP**

CODE: CLP-23



PS (Polystyrene Plastic)  
White



**PARMY CHEESE GRATER**

CODE: KA-01



Plastic  
Blue, White



**KUZIL KRAZY GRATER**

CODE: KA-02

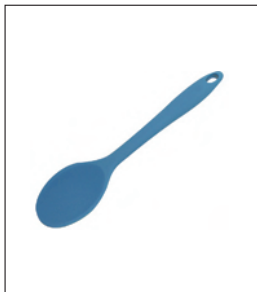


ABS (Acrylonitrile Butadiene  
Styrene)  
White, Blue, Green



## SILICONE SPOON

CODE: KA-04

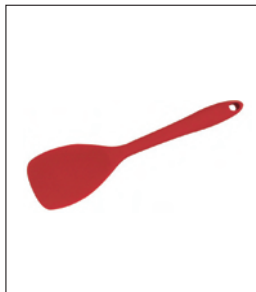


Silicone  
Blue, Green, Red



## SILICONE SQUARE SPOON

CODE: KA-05



Silicone  
Blue, Green, Red



## SPATULA

CODE: KA-06



Polypropylene  
White, Green, Cream, Translucent Red,  
Translucent Yellow, Translucent Blue,  
Translucent



## ICE CREAM SCOOP

CODE: KA-07



ABS (Acrylonitrile Butadiene  
Styrene)

White/Green, White/Red, White/Blue,  
White/Orange



## KUZIL CAN STRAINER

CODE: KA-08



ABS (Acrylonitrile Butadiene  
Styrene)  
White, Blue



## CORN BUTTERER

CODE: KA-09



Polypropylene  
Yellow



## MULTI-USE VEGETABLE PEELER

CODE: KA-10



ABS (Acrylonitrile Butadiene  
Styrene)  
White



## MULTI-USE MEASURE SPOON

CODE: KA-11



ABS (Acrylonitrile Butadiene  
Styrene)

Pink, White, Seaform Green, Cornflower Blue,  
Cranberry





**SNACK & WINE TRAY**

CODE: KA-12



Crystal styrene  
Clear



**SILICONE OVEN MITT**

CODE: KA-M13



Silicone  
Black, Red, Blue



**SILICONE DOUBLE SPATULA**

CODE: KA-14



Silicone  
Green, Blue, Red



**QUICK 'N SLICK SILICONE BASTING BRUSH**

CODE: KA-15



Silicone, ABS  
Blue, Red



**PRO'S CHOICE SILICONE PASTRY BRUSH**

CODE: KA-16



Polypropylene  
Red, Blue, Green



**BAMBOO SPATULA**

CODE: KA-17



Bamboo  
Bamboo



**BAMBOO SLOTTED SPOON**

CODE: KA-18



Bamboo  
Bamboo



**BAMBOO SERVING SPOON**

CODE: KA-19



Bamboo  
Bamboo



## ESSENTIAL USE MINI SPATULA

CODE: KA-20



Polypropylene  
Blue, Green, White



## OVER EASY COOKING SPATULA

CODE: KA-21



Nylon  
White



## PASTA PAL SPAGHETTI SERVER

CODE: KA-22



ABS plastic  
Red, Green, White



## KUZIL KRAZY STAND-UP VEGETABLE PEELER

CODE: KA-23



Plastic  
Blue, White, Green



## PEELER PAL VEGETABLE PEELER

CODE: KA-24



Polypropylene  
Blue, White, Green



## HERB & SPICE DOUBLE END MEASURING SPOON

CODE: KA-25



ABS plastic  
Blue, White, Green



## CONTINENTAL COFFEE SCOOP

CODE: KA-26



Polypropylene  
White



## PARTY SNACK & WINE TRAY

CODE: KA-27



Crystal Styrene  
Clear



**KUZIL KRAZY MR KOFFEEBEAN LID**

CODE: KA-28



Silicone  
White/Coffee Brown



**THERMA-GRIP SILICONE OVENMITT**

CODE: KA-31



Silicone  
Green, Blue, Red



**JAR OPENERS**

CODE: KA-29



Natural Rubber  
Red, Yellow, Lime, Seaform Green,  
Kelly Green, Teal, Blue, Purple, Gray,  
Hot Pink, Black, Cream, White



**JAR OPENERS**

CODE: KA-30



Natural Rubber  
Red, Yellow, Lime, Seaform Green,  
Kelly Green, Teal, Blue, Purple, Gray,  
Hot Pink, Black, Cream, White



**THERMA-GRIP SILICONE FINGERTIP MITT**

CODE: KA-32

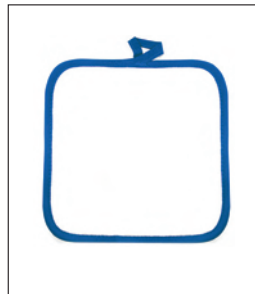


Silicone  
Blue, Green, Red



**THERMA-GRIP MAGNETIC POT HOLDER**

CODE: KA-33



Cotton  
White/Blue, White/Red



**THERMA-GRIP OVAL OVEN MITT**

CODE: KA-34



Cotton  
Blue, Red



**THERMA-GRIP POCKET OVEN MITT**

CODE: KA-35



Cotton  
Blue, Red



**MOMMA KITCHEN SCALE**

CODE: KA-37



Plastic  
Smoke, Blue



**ICE CREAM SCOOP**

CODE: KA-38



ABS  
White, Yellow



**METAL PIZZA CUTTER**

CODE: KA-39



Hard Plastic/Metal  
White/Black Trim



**PIZZA CUTTER**

CODE: KA-40



Hard Plastic  
Yellow, White, Red



**CAKE & PIE KNIFE**

CODE: KA-41



Hard Plastic  
White



**NYLON SPATULA**

CODE: KA-42



Nylon  
White



**PIZZA CUTTER 2**

CODE: KA-43



ABS (Acrylonitrile Butadiene Styrene)  
Red, Blue



**BASIC KITCHENWARE SET**

CODE: KA-44



Polypropylene  
Blue/Multicoloured



**LARGE OVAL TEMPERATURE GAUGE**

CODE: HI-01



Acrylic  
Clear, White



**OVAL TEMPERATURE GAUGE**

CODE: HI-02



Acrylic  
Clear, White



**SQUEEGEE**

CODE: HI-03



Hard Plastic  
White/Gray



**ARIA® APOTHECARY JAR**

CODE: HI-04



BPA free Acrylic/Plastic  
Base: Clear  
Lid: Transparent Sapphire Blue, Clear



**APOTHECARY JAR**

CODE: HI-05



BPA free Acrylic  
Base: Clear  
Lid: Clear, Sapphire Purple, Sapphire Blue



**VISIONSTEEL CADDY JAR**

CODE: HI-06



Steel/Acrylic  
Transparent Sapphire Blue/ Stainless Steel,  
Black/ Stainless Steel



**VISIONSTEEL APOTHECARY JAR**

CODE: HI-07



BPA free Steel/ Acrylic  
Clear/Stainless steel



**UTILITY CADDY JAR**

CODE: HI-08



SAN(Styrene Acrylonitrile)  
Black, White, Blue



## UTILITY CADDY JAR METALLIC FOIL

CODE: HI-09



SAN (Styrene Acrylonitrile)

Smoke, Blue, Red



## ARRONDI™ CADDY JAR

CODE: HI-10



SAN (Styrene Acrylonitrile)

Black, White, Transparent Sapphire Blue



## BUSINESS CARD MAGNET

CODE: HI-M11



Magnet

Custom design



## THICK BUSINESS CARD MAGNET

CODE: HI-M12



Magnet

Custom design



## ROUND CORNERS BUSINESS CARD MAGNET

CODE: HI-M13



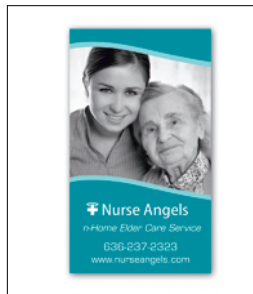
Magnet

Custom design



## JUMBO BUSINESS CARD MAGNET

CODE: HI-M14



Magnet

Custom design



## SPORTS SCHEDULE MAGNET

CODE: HI-M15



Magnet

Custom design



## PORTRAIT SPORTS SCHEDULE MAGNET

CODE: HI-M16



Magnet

Custom design



**BASKETBALL SPORTS SCHEDULE MAGNET**

CODE: HI-M17



Magnet  
Custom design



**CALENDAR MAGNET**

CODE: HI-M18



Magnet  
Custom design



**LARGE CALENDAR MAGNET**

CODE: HI-M19



Magnet  
Custom design



**HEART MAGNET**

CODE: HI-M20

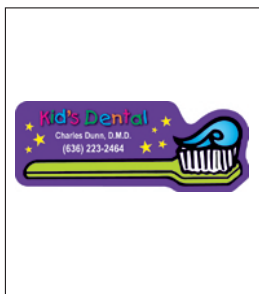


Magnet  
Custom design



**DENTAL MAGNET**

CODE: HI-M21



Magnet  
Custom design



**HEALTHCARE MAGNET**

CODE: HI-M22



Magnet  
Custom design



**PIZZA SLICE MAGNET**

CODE: HI-M23



Magnet  
Custom design



**APPLE MAGNET**

CODE: HI-M24



Magnet  
Custom design



**ICECREAM MAGNET**

CODE: HI-M25



Magnet  
Custom design



**MEAL SETTING MAGNET**

CODE: HI-M26



Magnet  
Custom design



**WINE BOTTLE MAGNET**

CODE: HI-M27



Magnet  
Custom design



**CUSTOM MAGNET**

CODE: HI-M28



Magnet  
Custom design



**BLANK NOTEPAD MAGNET**

CODE: HI-M29



Magnet  
Custom design



**SHOPPING LIST PAD MAGNET**

CODE: HI-M30

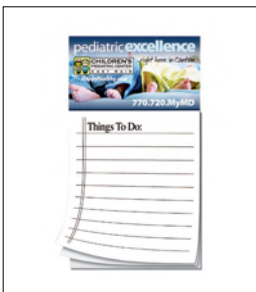


Magnet  
Custom design



**THINGS TO DO PAD MAGNET**

CODE: HI-M31



Magnet  
Custom design



**GOURMET LUNCH BOX**

CODE: FS-01



Silicone  
Red, Blue, Orange, Green, Yellow





**GO LUNCHTIME 5 PIECE CONTAINER SET**

CODE: FS-02



BPA free Polypropylene  
White



**PET WASTE BAG DISPENSER**

CODE: PET-D01



Biodegradable  
Red, Blue, White



**FIRE HYDRANT PET WASTE BAG DISPENSER**

CODE: PET-D02



Biodegradable  
Red, Blue, White, Yellow



**COLLAPSIBLE PET BOWL**

CODE: PET-03



Plastic  
Clear



**PLASTIC PET BOWL**

CODE: PET-04



Plastic  
Red, Blue, White



**STAINLESS STEEL LINER PET BOWL**

CODE: PET-05



Stainless steel  
Steel/Translucent Red, Steel/Translucent Blue, Steel/Clear



**BONE SHAPE WASTE BAG**

CODE: PET-D06



Polypropylene  
White



# CUSTOM MAGNET

CODE: HI-M28



- ▶ Flat flexible magnets in any shape you like
- ▶ Three easy steps:
  - 1) Create your shape and message
  - 2) Send us your artwork, message and specifications
  - 3) We'll produce the custom shaped magnet by your specifications
- ▶ Approximately 0.5 mm thickness and eco-friendly
- ▶ Size: Custom Size



# OUTDOOR & TRAVEL



**SABRE UMBRELLA**

CODE: U-01



Polyester with steel ribs  
Black/Blue, Black/White, Black/Red



**DELUXE 76CM GOLF UMBRELLA**

CODE: U-G02



210T polyester/metal  
Blue/White, Red/White, Sky/White



**DELUXE 58CM AUTOMATIC UMBRELLA**

CODE: U-03



210T polyester/Metal  
Blue/White, Sky/White, Red/White



**FOLDING UMBRELLA**

CODE: U-04



Polyester  
Black



**WIND RESILIENT UMBRELLA**

CODE: U-05



190T polyester pongee  
Blue



**INFLATABLE COUCH**

CODE: CSM-C02



Elastoplanolium™/Canvas  
Black/Black, Black/White, Black/Red,  
Black/Blue, Black/Green, Black/Yellow



**INFLATABLE L CHAIR**

CODE: CSM-C03



Elastoplanolium™/Canvas  
Black/Black, Black/White, Black/Red,  
Black/Blue, Black/Green, Black/Yellow



**INFLATABLE LOUNGER**

CODE: CSM-C04



Elastoplanolium™/Canvas  
Black/Black, Black/White, Black/Red,  
Black/Blue, Black/Green, Black/Yellow



**INFLATABLE OTTOMAN**

CODE: CSM-C05



Elastoplanolium™/Canvas  
 Black/Black, Black/White, Black/Red,  
 Black/Blue, Black/Green, Black/Yellow



**INFLATABLE ROCKER**

CODE: CSM-S06



Elastoplanolium™/Canvas  
 Black/Black, Black/White, Black/Red,  
 Black/Blue, Black/Green, Black/Yellow



**INFLATABLE STOOL**

CODE: CSM-S07



Elastoplanolium™/Canvas  
 Black/Black, Black/White, Black/Red,  
 Black/Blue, Black/Green, Black/Yellow



**OCEANSIDE BEACH MAT**

CODE: CSM-M08



Polypropylene  
 Blue/White, Green/White, Red/White,  
 Yellow/White



**STADIUM MAT**

CODE: CSM-M09



Polypropylene  
 Red, Blue, Green, Orange, Yellow



**YOGA MAT**

CODE: CSM-M10



PVC (Polyvinyl Chloride)  
 Blue



**SEE IT SAFE®**

CODE: TA-L01



ABS plastic  
 Clear, Green, Red, Yellow, Blue,  
 Purple, Military Green



**SURF SAFE®**

CODE: TA-L02



ABS plastic  
 Red, Yellow, Black, Blue, Green,  
 Pink, Purple



**KEEPIT CLEAR®**

CODE: TA-L03



ABS plastic  
Red, Yellow, Black, Blue, Green, Clear,  
Purple, Military Green



**FLOWER SURFSAFE®**

CODE: TA-L04



ABS plastic  
Pink, Blue, Green



**KEEP IT SAFE® ANIMAL PRINT**

CODE: TA-L05



ABS plastic  
Black Zebra, Pink Zebra, Cheetah



PATENTED

**SMARTPHONELOCKER®**

CODE: TA-L06



ABS plastic  
Black, White, Clear, Blue, Pink



PATENTED

**SMART PHONE LOCKER® II**

CODE: TA-L07



ABS plastic  
Black, Clear, White



PATENTED

**PASSPORT LOCKER™**

CODE: TA-L08



Crush resistant shell  
Black, Clear, Blue



PATENTED

**ID LOCKER™**

CODE: TA-L09



Crush resistant shell  
Clear



PATENTED

**CARABINER WITH RING**

CODE: TA-C10



Aluminium  
Black, Red, Blue, Yellow, Purple



**RIBBON CARABINER**

CODE: TA-C11



Metal  
Pink



**EXECUTIVE LUGGAGE TAG**

CODE: TA-T12



Metal  
Black, Gunmetal



**LUGGAGE GRABBER**

CODE: TA-T13



PVC/Foam  
Lime, Orange, Blue, Purple, Red,  
Yellow, Pink



**SLIP-IN ID LUGGAGE TAG**

CODE: TA-T14



Vinyl  
Yellow, Red, Brown, Burgundy, White,  
Forest Green, Gray, Black, Clear,  
Translucent Purple, Kelly Green, Navy,  
Teal, Purple, Royal, Pacific Blue, Silver,  
Sky, Translucent Blue, Translucent Red,  
Translucent Orange, Translucent Green



**TRAVEL SLIP-IN LUGGAGE TAG**

CODE: TA-T15



Vinyl  
White



**OVAL LUGGAGE TAG**

CODE: TA-T16



Hard Plastic  
Red, Blue, Green



**PRIVACY LUGGAGE TAG**

CODE: TA-T17



Hard Plastic  
White



**SLIDE OUT LUGGAGE TAG**

CODE: TA-T18



Hard Plastic  
White, Black, Translucent Blue,  
Translucent Red, Translucent Purple



**BASIC LUGGAGE TAG**

CODE:TA-T19



Hard Plastic  
Red, Black, Blue, White



**LUGGAGE TAG**

CODE:TA-T20



HIPS (High Impact Polystyrene)  
White/Black



**LUGGAGE GRIPPER**

CODE:TA-T21

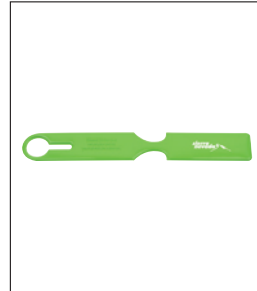


Polyester  
Black, Red, Blue



**VOYAGE LUGGAGE TAG**

CODE:TA-T22



PVC (Polyvinyl Chloride)  
Red, Blue, Green, White



**POCKET BINOCULARS**

CODE:TA-23



ABS (Acrylonitrile Butadiene Styrene)  
White/Black



**SILICONE BBQ SET**

CODE:BQ-01



Silicone  
Blue, Red, Black





# INFLATABLE FURNITURE



- ▶ Elastoplanolium™ with canvas outer shell
- ▶ Patent Pending contemporary inflatable sofa brings a unique high end feel and design element with all the benefits of an inflatable product
- ▶ Made from a specialised proprietary Elastoplanolium™ with canvas outer shell
- ▶ Can withstand much heavier usage and is comfortable
- ▶ Abrasion resistance and durable
- ▶ Outstanding low-temperature performance
- ▶ Environmentally friendly
- ▶ High elasticity
- ▶ No smell (unlike most PVC materials), non toxic
- ▶ Stock colours available: Black, White, Red (PMS 186), Blue (PMS 286), Green (PMS 348), Yellow(PMS 116)



CODE: CSM-C02



CODE: CSM-C03



CODE: CSM-C04

# INFLATABLE FURNITURE



- ▶ Elastoplanolium™ with canvas outer shell
- ▶ Patent Pending contemporary inflatable sofa brings a unique high end feel and design element with all the benefits of an inflatable product
- ▶ Made from a specialised proprietary Elastoplanolium™ with canvas outer shell
- ▶ Can withstand much heavier usage and is comfortable
- ▶ Abrasion resistance and durable
- ▶ Outstanding low-temperature performance
- ▶ Environmentally friendly
- ▶ High elasticity
- ▶ No smell (unlike most PVC materials), non toxic
- ▶ Stock colours available: Black, White, Red (PMS 186), Blue (PMS 286), Green (PMS 348), Yellow(PMS 116)



CODE: CSM-C05



CODE: CSM-S06



CODE: CSM-S07



# HEALTHCARE & PERSONAL CARE



**100ML COLLAPSIBLE CUP WITH PILL BOX**

CODE: HC-P07



Plastic  
White



**TWICE-A-DAY PILL TRAY**

CODE: HC-P08



Polypropylene  
White



**ALL-WEEK PILL BOX**

CODE: HC-P10



Polypropylene  
White, Granite, Translucent, Translucent Yellow, Translucent Orange, Translucent Purple, Translucent Green, Translucent Pink, Caribbean Blue



**HEART PILL BOX**

CODE: HC-P11



Polypropylene  
White, Red



**MED-WEEK PILL BOX**

CODE: HC-P12



Polypropylene  
White, Crystal Blue



**TABLET TOTE PILL BOX**

CODE: HC-P13



Polypropylene  
White, Translucent, Crystal Blue



**SMOOTH-DOSE PILL SPLITTER**

CODE: HC-P14



Polypropylene  
White, Clear



**24/7 MEDICINE TRAY ORGANISER**

CODE: HC-P19



Polypropylene  
White/Translucent



## RAINBOW 24/7 MEDICINE TRAY ORANISER

CODE: HC-P20



Polypropylene  
White/Rainbow



## FORMAL AFFAIR METAL PILL CASE

CODE: HC-P21



Metal  
Polished Chrome



## FILL, FOLD & FLY MEDICINE BOX

CODE: HC-P22



Polypropylene  
White, Translucent Blue



## PUSH'N SAVE TUBE SQUEEZER

CODE: HC-P23



Plastic  
White



## SIMPLE PILL BOX

CODE: HC-P25



Polypropylene  
Transparent Pink, Transparent Blue, Clear



## MULTIFUNCTIONAL PILL BOX

CODE: HC-P26



ABS (Acrylonitrile Butadiene Styrene)  
White



## 6 COMPARTMENT PILL BOX

CODE: HC-P27



Polypropylene  
Transparent Blue, Transparent Pink



## TURNING PILL DISPENSER

CODE: HC-P28



PS (Polystyrene Plastic)  
Clear/White



**ROUND PILL BOX**

CODE: HC-P29



Polypropylene  
Transparent Red, Transparent Blue



**SHOWER TIMER**

CODE: PM-T01



Hard plastic  
White, Blue



**MULTIFUNCTION Pedometer**

CODE: PM-P02



Hard plastic  
Black



**PEDOMETER**

CODE: PM-P03



Hard plastic  
Translucent Blue, Translucent Red



**CLIP-ON Pedometer**

CODE: PM-P05



ABS (Acrylonitrile Butadiene Styrene)  
Silver



**CARD HOLDER**

CODE: PI-H01



Silicone  
White, Black, Blue, Red, Green



**iWALLET**

CODE: PI-H02



Silicone  
Black



**"MICROPAK" MICROFIBRE CLOTH IN CLEAR POUCH**

CODE: PI-C03



Cloth: 100% Micro-fiber  
Case: PVC vinyl  
Gray, Red, Blue, Green, Purple



## CREDIT CARD DENTAL FLOSS WITH MIRROR

CODE: PI-D04



Hard plastic

Custom Colour



## TRAVELLER'S TOOTHBRUSH

CODE: PI-D05



Plastic

White, Clear, Translucent Red



## FOLD-AWAY TOOTHBRUSH

CODE: PI-D06



Hard plastic

White/Green, White/Blue



## TRAVEL BRUSH

CODE: PI-07



Plastic/Mirror/Rubber

White



## LINT ROLLER

CODE: PI-08



Plastic

Black handle



## PURSE HOOK

CODE: PI-09



Metal

Silver



## FOLDING HAIRBRUSH

CODE: PI-10



ABS (Acrylonitrile Butadiene Styrene)

White/Black



## FOLDING LINT BRUSH

CODE: PI-11



ABS (Acrylonitrile Butadiene Styrene)

White



**WATERPROOF BAG WITH LANYARD**

CODE: PI-12



PVC (Polyvinyl Chloride)  
Clear



**MALIBU SUNGLASSES**

CODE: SG-01



Polycarbonate  
White, Black, Pink



**BONDI SUNGLASSES**

CODE: SG-02



Polypropylene  
White, Black, Red, Blue, Green, Pink, Purple



**WAYFARER SUNGLASSES**

CODE: SG-03



Recycled plastic/Metal  
Custom design



**SUNGLASSES POUCH**

CODE: SG-04



Custom dyed fabric  
Custom colour



**SUNGLASSES POUCH 2**

CODE: SG-05



Microfibre Cloth  
White



**TERRY VELOUR SLIPPERS**

CODE: SL-C01



100% cotton terry velour  
White



**TERRY SLIPPERS**

CODE: SL-C02



100% cotton terry  
White, Hot Pink, Lime, Purple





## WAFFLE WEAVE SLIPPERS

CODE: SL-C03



100% cotton waffle  
White, Aqua, Black, Dark Chocolate,  
Light Pink, Hot Pink, Lime



## THONGS

CODE: SL-T04



Rubber  
White, Black



## ADULT FLIP FLOPS

CODE: SL-T05



Plastic/Rubber  
Black, Red, Orange, Pink, Purple, Blue,  
Green, Yellow/Black



## STRIPED ADULT THONGS

CODE: SL-T06



Plastic/Rubber  
White/Pink, White/Red, White/Yellow,  
White/Blue, White/Black,



## ON THE GO PONCHO

CODE: PON-01



PVC  
Clearer, Translucent Pink, Translucent Blue



## POCKET BALL PONCHO

CODE: PON-02



PS (Polystyrene Plastic)  
White, Red, Blue



## BONITA LED LIGHT MIRROR

CODE: COS-R01



Plastic  
White, Blue, Red



## FOLDING NAIL FILE

CODE: COS-M02



Plastic  
White, Pink



**MIRROR COMPACT**

CODE: COS-R03



Hard plastic/Mirror  
White, Blue, Red, Black



**DEBUTANTE TEMPERED GLASS NAIL FILE**

CODE: COS-M04



Tempered Glass  
Translucent Blue, Translucent Lime, Translucent Red, Translucent Purple, Translucent Pink, Translucent Clear



**SQUARE METAL COMPACT MIRROR**

CODE: COS-R05



Metal  
Metal



**ROUND METAL COMPACT MIRROR**

CODE: COS-R06



Metal  
Metal



**NAIL FILE & CASE**

CODE: COS-M08



Plastic case  
Light Green with Blue/White file



**ARCHED COMPACT MIRROR**

CODE: COS-R09



Hard plastic/Mirror  
Translucent Purple, Translucent Blue, Translucent Pink



**ILLUMINATED COMPACT MIRROR**

CODE: COS-R10



Plastic/Mirror  
Metallic Gray, Cream



**ILLUMINATED SQUARE COMPACT MIRROR**

CODE: COS-R11



Plastic/Mirror  
Silver



## SLIM ROUND MIRROR

CODE: COS-R12



PS (Polystyrene Plastic)

Clear, Transparent Red, Transparent Blue



## POCKET MIRROR WITH NAIL FILE

CODE: COS-R13



ABS (Acrylonitrile Butadiene Styrene)

White



## MANICURE SET KEYRING

CODE: COS-M14



ABS (Acrylonitrile Butadiene Styrene)

Red, Blue



## WATER RESISTANT SILICONE SPORTS WATCH

CODE: W-W01



Silicone

White, Pink, Red, Brown, Orange, Yellow, Green, Blue, Purple, Black



## REGULAR TISSUE BOX

CODE: PI-13



Paper

Shapes: Cube, Rectangular Prism, Triangular Prism  
Custom imprint



## POP-UP TISSUE BOX

CODE: PI-14



Paper

Custom imprint



# WAYFARER SUNGLASSES

CODE: SG-03



- ▶ Wayfarer sunglasses
- ▶ High quality recycled plastic, non toxic with sturdy metal hinges
- ▶ UV400 lenses included
- ▶ FDA certified polarised lenses available
- ▶ Exact PMS matching and fully customisable
- ▶ A variety of frame and lens printing options available
- ▶ Size: 140x140x51 mm

Decoration:

▶ **Frame printing available**

- ▶ 2-tone or 3-tone
- ▶ Full frame print - print logo all over the frames
- ▶ Full arm print - print logo on side arms only
- ▶ Metallic paint - metallic gold or silver coloured frames
- ▶ Inner arm print - print message on inside of arm lens printing available

▶ **Lens printing available**

- ▶ Electroplating - chemical process that permanently bonds your logo to the lenses.  
Please note that this works best when the logo is not large blocks of colour on the lenses.  
Large block of colour in the middle of the lenses make glasses very hard to see through.
- ▶ Half tone - chemical process that permanently bonds your logo to the lenses. This process prints your logo in hundreds of tiny dots all over the lenses. This allows for you to print a large colour blocked logo while still allowing for visibility. While this allows you to see through the lenses, colours are frequently dulled due to the half tone printing.
- ▶ Lens stickers -fully customise using a permanent sticker
- ▶ Metallic lenses - reflective lenses



# SUNGLASSES POUCH

CODE: SG-04



- ▶ Soft pouch protects your sunglasses
- ▶ Made from custom dyed fabric
- ▶ Print custom logo on outside of pouch
- ▶ Size: 89Hx172W mm



CUSTOM SOFT POUCH



### FRAME PAINTING



TWO TONE



METALLIC PAINT

### LOGO PRINTING



STEP & REPEAT



FULL COLOR

### LENS DECORATION



LENS STICKERS



HALFTONE



ELECTROPLATING



METALLIC

### PREMIUM ADD-ONS



# TOWELS & BLANKETS



## MICROFIBRE VELOUR BEACH TOWEL

CODE: BTL-P01



240gsm 100% microfibre polyester velour

White



## PROMOTIONAL LOOP TERRY BEACH TOWEL

CODE: BTL-02



260gsm 100% cotton loop terry

White, Black, Aqua, Hot Pink, Lime, Orange, Royal, Yellow



## PROMOTIONAL VELOUR BEACH TOWEL

CODE: BTL-03



290gsm 100% cotton tripe sheared terry velour

White, Aqua, Lime, Royal, Yellow



## PROMOTIONAL VELOUR BEACH TOWEL

CODE: BTL-04



360gsm 100% cotton triple sheared terry velour

White, Black, Aqua, Beige, Burgundy, Chocolate, Hot Pink, Kelly Green, Lavender, Light Pink, Lime, Navy, Orange, Purple, Red, Royal, Silver, Sky Blue, Yellow



## KING SIZE TERRY BEACH TOWEL

CODE: BTL-05



490gsm 100% cotton loop terry

White, Black, Aqua, Beige, Burgundy, Chocolate, Hot Pink, Hunter Green, Kelly Green, Lavender, Lime, Navy, Orange, Purple, Red, Royal, Yellow



## SUBLI-COTTON TERRY BEACH TOWEL

CODE: BTL-P06



270gsm 60% cotton 40% microfibre polyester terry

White



## MICRO COTTON BEACH TOWEL

CODE: BTL-07



620gsm 100% microcotton loop terry

White



## STOCK FIBRE REACTIVE PRINT BEACH TOWEL

CODE: BTL-08



300gsm 100% cotton, tripe sheared terry velour

White



**CUSTOM JACQUARD TERRY VELOUR BEACH TOWEL**

CODE: BTL-09



520gsm 100% cotton yarn dyed terry velour

Cotton yarn dyed



**CUSTOM JACQUARD LOOP TERRY BEACH TOWEL**

CODE: BTL-10



580gsm cotton yarn dyed loop terry

42 colours available



**CABANA STRIPED LOOP TERRY BEACH TOWEL**

CODE: BTL-11



360gsm cotton yard dyed loop terry

White/Green, White/Red, White/Yellow, White/Blue



**LEOPARD PRINT BEACH TOWEL**

CODE: BTL-12



360gsm 100% cotton terry velour

Leopard



**ZEBRA PRINT BEACH TOWEL**

CODE: BTL-13



360gsm 100% cotton terry velour

Zebra



**SMALL BEACH TOWEL**

CODE: BTL-14



378gsm 100% cotton terry velour

White, Black, Coastal Blue, Lime Green, Red, Pink



**JEWEL COLLECTION BEACH TOWEL**

CODE: BTL-15



278gsm 100% cotton terry velour

White



**BASIC BEACH TOWEL**

CODE: BTL-16



340gsm 100% cotton terry velour

White





## JEWEL COLLECTION COLOURED BEACH TOWEL

CODE: BTL-17



340gsm 100% cotton terry velour

Black, Navy, Royal, Coastal Blue, Hunter Green, Lime, Apple, Purple, Red, Pink, Orange, Gold, Lemon



## MIDWEIGHT BEACH TOWEL

CODE: BTL-18



390gsm 100% cotton terry velour  
White



## MIDWEIGHT COLOURED BEACH TOWEL

CODE: BTL-19



420gsm 100% cotton terry velour

Black, Navy, Royal, Coastal Blue, Hunter Green, Aquamarine, Lime, Apple, Purple, Burgundy, Red, Pink, Orange, Gold, Lemon, Chocolate, Natural



## POLKA DOT TERRY VELOUR BEACH TOWEL

CODE: BTL-20



358gsm 100% cotton triple sheared terry velour

Fuchsia/White, Aqua/White, Black/White, Purple/White



## ORGANIC TURKISH COTTON BEACH TOWEL

CODE: BTL-21



456gsm 100% organic Turkish cotton loop terry

Natural



## PREMIUM VELOUR GOLF TOWEL

CODE: GT-01



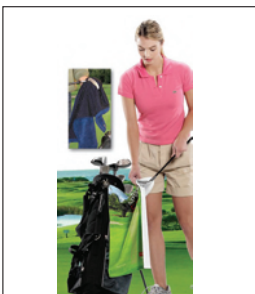
490gsm 100% cotton triple sheared terry towel

White, Black, Aqua, Beige, Burgundy, Gold, Hot Pink, Hunter Green, Lavender, Light Blue, Light Pink, Lime, Navy, Orange, Purple, Red, Royal, Silver, Sky Blue, Yellow



## MICROFIBRE SCRUBBER GOLF TOWEL

CODE: GT-P02



260gsm 55% microfibre polyester 45% polyethylene

White, Black, Navy



## BRUSHED VELOUR GOLF TOWEL

CODE: GT-03



390gsm 88% cotton 12% polyester brushed terry velour gold towel

White, Yellow



## PREMIUM VELOUR TRIFOLD GOLF TOWEL

CODE: GT-04



490gsm 100% cotton triple sheared terry velour

White, Black, Aqua, Beige, Burgundy, Gold, Hot Pink, Hunter Green, Lavender, Light Blue, Light Pink, Light Lime, Navy, Orange, Purple, Red, Royal, Silver, Sky Blue, Yellow



## TERRY VELOUR & LOOP TERRY JACQUARD GOLF TOWEL

CODE: GT-05



600gsm 100% cotton terry

Custom colour



## MICROFIBRE VELOUR SUB GOLF TOWEL

CODE: GT-P06



240gsm 100% microfibre polyester

Sublimation



## AUGUSTA MICROFIBRE GOLF TOWEL

CODE: GT-P07



400gsm 100% microfibre polyester

White, Blue, Red, Green



## MICROFIBRE VELOUR SUB GOLF TOWEL

CODE: GT-P08



240gsm 100% microfibre polyester

Zebra



## LIGHTWEIGHT GOLF TOWEL

CODE: GT-09



325gsm 100% cotton terry velour

White, Black, Navy, Royal, Hunter Green, Red, Orange, Gray



## LIGHTWEIGHT GOLF TOWEL

CODE: GT-10



325gsm 100% cotton terry velour

White, Black, Navy, Royal, Hunter Green, Red, Orange, Gray



## SOFT TOUCH GOLF TOWEL

CODE: GT-11



280gsm 100% cotton terry velour

White, Black, Navy, Royal, Carolina Blue, Hunter Green, Kelly Green, Burgundy, Red, Pink, Texas Orange, Orange, Gold, Purple, Vegas Gold, Gray



## PREMIUM VELOUR FITNESS TOWEL

CODE: SPT-01



440gsm 100% cotton, triple sheared, terry velour

White, Black, Aqua, Red, Yellow



## PREMIUM VELOUR HAND & SPORTS TOWEL

CODE: SPT-02



550gsm 100% cotton triple sheared terry velour

White, Black, Aqua, Beige, Burgundy, Gold, Hot Pink, Hunter Green, Lavender, Light Blue, Light Pink, Lime, Navy, Orange, Purple, Red, Royal, Silver, Sky Blue, Yellow



## MICROFIBRE VELOUR SPORTS TOWEL

CODE: SPT-06



240gsm 100% microfibre polyester

White



## MICROFIBRE VELOUR SPORTS TOWEL

CODE: SPT-07



240gsm 100% microfibre polyester

White



## MICROFIBRE VELOUR BAR TOWEL

CODE: SPT-08



240gsm 100% microfibre polyester

White



## LIGHTWEIGHT SPORTS TOWEL

CODE: SPT-09



325gsm 100% cotton terry velour

White, Black, Navy, Royal, Hunter Green, Red, Orange, Gray



## SOFT TOUCH SPORTS TOWEL

CODE: SPT-10



280gsm 100% cotton terry velour

White, Black, Navy, Royal, Carolina Blue, Hunter Green, Kelly Green, Burgundy, Red, Pink, Texas Orange, Orange, Gold, Purple, Vegas Gold, Gray



## SPORTS TOWEL

CODE: SPT-11



400gsm 100% cotton terry velour

White, Black, Navy, Royal, Hunter Green, Burgundy, Red, Gold, Natural



## ANTIMICROBIAL FITNESS TOWEL

CODE: SPT-12



465gsm 100% cotton terry velour

White, Black, Navy, Royal, Coastal Blue, Lime Green, Orange, Red, Pink



## VELOUR FINGERTIP SPORTS TOWEL

CODE: SPT-13



440gsm 100% cotton terry velour

White, Black, Navy, Royal, Hunter Green, Red, Gold, Natural



## BASEBALL SHAPED SPORTS TOWEL

CODE: SPT-14



290gsm 100% cotton velour

Baseball colour



## BASKETBALL SHAPED SPORTS TOWEL

CODE: SPT-15



290gsm 100% cotton velour

Basketball colour



## GOLF BALL SHAPED SPORTS TOWEL

CODE: SPT-16



290gsm 100% cotton velour

Golf ball colour



## SOCCER BALL SHAPED SPORTS TOWEL

CODE: SPT-17



290gsm 100% cotton velour

Soccer ball colour



## TENNIS BALL SHAPED SPORTS TOWEL

CODE: SPT-18



290gsm 100% cotton velour

Tennis ball colour



## ORGANIC TURKISH COTTON HAND & SPORTS TOWEL

CODE: SPT-H19



440gsm 100% organic Turkish cotton loop terry

Natural



## PROMO WEIGHT TERRY EVENT TOWEL

CODE: SPT-20



237gsm 100% cotton loop terry

White, Black, Ath. Gold, Carolina Blue, Pruple, Navy, Orange, Red, Royal, Silver



## TERRY GYM TOWEL

CODE: SPT-21



260gsm 100% cotton loop terry

White



## COMPRESSED TOWEL

CODE: SPT-22



100% cotton

White



## KID'S TERRY VELOUR HOODED COVERUP

CODE: RB-K01



100% cotton, triple sheared, terry velour

White, Navy, Pink



## ZEBRA PRINT SPA WRAP

CODE: RB-02



360gsm 100% cotton terry velour

Zebra colour



## LEOPARD PRINT SPA WRAP

CODE: RB-03



360gsm 100% cotton terry velour

Leopard colour



## POLKA DOT SPA WRAP

CODE: RB-04



360gsm 100% cotton terry velour

Fuchsia/White, Aqua/White, Black/White, Purple/White



## TERRY VELOUR SPA WRAP

CODE: RB-05



400gsm 100% cotton terry velour

White, Black, Navy, Hot Pink, Purple, Red, Pink



## WAFFLE WEAVE SPA WRAP

CODE: RB-06



200gsm 60% cotton 40% polyester waffle weave

White, Black, Navy, Aqua, Dark Chocolate, Lavender, Hot Pink, Light Pink, Lime, Purple



## WAFFLE WEAVE SHORT KIMONO ROBE

CODE: RB-07



200gsm 60% cotton 40% polyester waffle weave

White, Black, Navy, Aqua, Dark Chocolate, Lavender, Hot Pink, Light Pink, Lime, Purple



## WAFFLE WEAVE KIMONO ROBE

CODE: RB-08



200gsm 60% cotton 40% polyester waffle weave

White, Beige



## MENS WAFFLE WEAVE KIMONO ROBE

CODE: RB-09



200gsm 60% cotton 40% polyester waffle weave

White



## LOOP TERRY TRAVELLER'S KIMONO ROBE

CODE: RB-10



150gsm 60% cotton 40% polyester terry

White



## TAHOE MICROFLEECE SHAWL COLLAR ROBE

CODE: RB-11



280gsm 100% microfibre polyester fleece

Black, Beige, Burgundy, Chocolate, Navy, Purple, Light Pink



## FREEDOM PICNIC BLANKET

CODE: BKT-B01



Tartan fleece  
Royal, Navy



## INDULGENCE FLEECE BLANKET

CODE: BKT-B02



600D polyester/Fleece  
Royal, Navy



## POLAR FLEECE STADIUM BLANKET

CODE: BKT-B03



220gsm 100% polyester polar fleece

Black, Burgundy, Chocolate, Gray, Hot Pink, Hunter Green, Kelly Green, Khaki, Navy, Orange, Purple, Red, Royal, Yellow



## BRUSHED FLEECE TRAVEL BLANKET

CODE: BKT-B04



190gsm 100% polyester fleece

Black, Light Pink, Red, Royal



## CORAL FLEECE THROW

CODE: BKT-T05



260gsm 100% microfibre polyester

Black, Burgundy, Camel, Cream, Chocolate, Forest Green, Gray, Navy, Pink, Purple, Red, Royal



## PROMO FLEECE THROW

CODE: BKT-T06



100% polyester

Black, Purple, Orange, Hunter Green, Maroon, Cream, Navy, Pink, Gray, Red, Yellow, Royal



## MICRO MINK SHERPA BANKET

CODE: BKT-B07



100% polyester

Black, Maroon, Gray, Natural, Chocolate, Hunter Green, Red, Navy, Sage, Tan, Royal



## FLEECE/NYLON PICNICBLANKET

CODE: BKT-B08



100% polyester

Black, Red, Navy, Royal, Charcoal, Maroon, Hunter Green, Red Plaid, Blue Plaid



## MICRO-PLUSH FLEECE BLANKET

CODE: BKT-B09



100% polyester

Black, Chocolate, Gray, Hunter Green, Maroon, Cream, Navy, Pink, Purple, Red, Royal, Tan



## FLEECE THROW

CODE: BKT-T10



100% polyester

Black, Chocolate, D.Gray, Gray, Red, Pink, Hunter Green, Maroon, Natural, Orange, Royal, Navy, Purple, Tan, Yellow



## PICNIC BLANKET

CODE: BKT-B11



Nylon/Polar fleece

Black, Red, Blue



## BRITISH STYLE BLANKET

CODE: BKT-B12



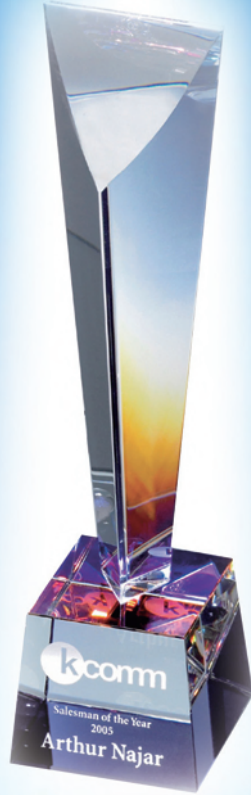
Nylon/Polar fleece

Red, Blue





# AWARDS & TROPHIES





**PARED ART GLASS AWARD**

CODE: GL-01



Art glass

Earth Tones



**AMBER TWIST ART GLASS AWARD**

CODE: GL-02



Art glass

Amber



**GLACIAL ART GLASS AWARD**

CODE: GL-03



Art glass

Blue



**AERATOR ART GLASS AWARD**

CODE: GL-04



Art glass

Earth Tones



**FLOURISH LARGE ART GLASS AWARD**

CODE: GL-05



Art glass

Multi Coloured



**THE BEACON**

CODE: GL-06



Art glass

Clear/Rosewood



**PACIFICA**

CODE: GL-07



Art glass

Clear/Blue/Rosewood



**INCLINATION COBALT OPTICALLY PERFECT AWARD**

CODE: OPT-01



Art glass

Blue



## INCLINATION COBALT OPTICALLY PERFECT AWARD

CODE: OPT-02



Art glass

Blue



## THE STONGHOLD TOWER

CODE: OPT-03



Art glass

Clear



## ASHFORD SMALL PLAQUE AWARD

CODE: PLA-01



Grained walnut wood plaque

Walnut



## ARCOBALENO DICHROIC CRYSTAL AWARD

CODE: DICH-01



Crystal

Dichroic



## WOODEN BOX POKER SET

CODE: GW-01



Rosewood

Wood



## GEAR CLOCK

CODE: GW-02



Metal

Silver



## AUTO ADJUSTING AVIATOR CLOCK

CODE: GW-03



Metal

Black

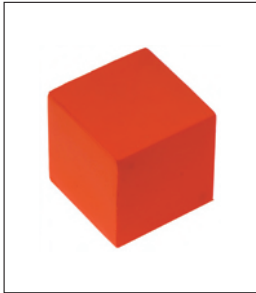


# NOVELTIES & TOYS



**STRESS CUBE**

CODE: STR-01



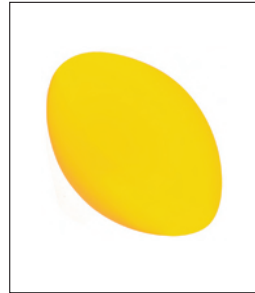
Foam

Blue, Red, Yellow



**STRESS RUGBY BALL**

CODE: STR-02



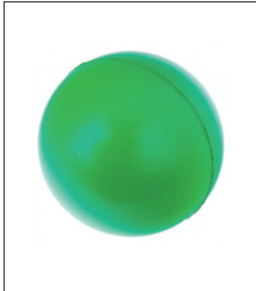
Foam

Blue, Red, Yellow



**STRESS BALL**

CODE: STR-03



Foam

Blue, Red, Yellow, Black, White, Green



**STRESS FOOTBALL**

CODE: STR-04



Foam

Blue, Red, Yellow



**STRESS HARD HAT**

CODE: STR-05



Foam

Yellow



**STRESS THONG**

CODE: STR-06



Foam

White/Black



**STRESS T-SHIRT**

CODE: STR-12



Foam

White, Blue, Red



**STRESS TRUCK**

CODE: STR-13

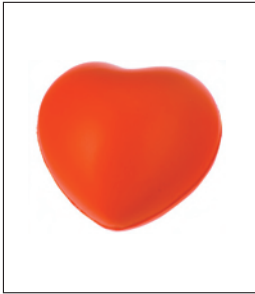


Foam

White/Red/Gray/Black/Yellow



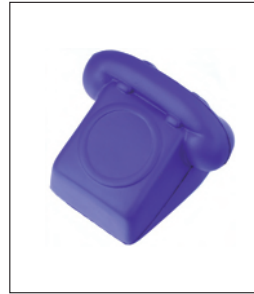
**STRESS HEART**  
CODE: STR-17



Foam  
Red



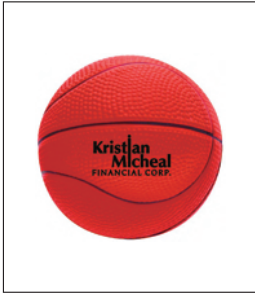
**STRESS PHONE**  
CODE: STR-18



Foam  
Blue, Red, Yellow



**STRESS BASKETBALL**  
CODE: STR-19



Polyurethane  
Basketball colour



**STRESS GOLF BALL**  
CODE: STR-20



Polyurethane  
Golf ball colour



**STRESS SOCCER BALL**  
CODE: STR-21



Polyurethane  
Soccer colour



**STRESS LUCKY DICE**  
CODE: STR-22



Polyurethane  
White/Black, Red/White



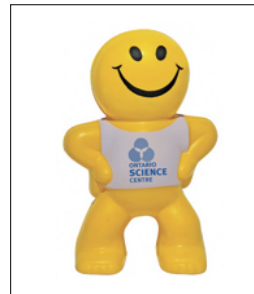
**STRESS BEACH BALL**  
CODE: STR-23



Polyurethane  
Multicolour



**STRESS MR SMILEY**  
CODE: STR-24



Polyurethane  
Yellow/White



**STRESS HAPPY FACE YO-YO**

CODE: STR-25



Polyurethane

Yellow/Black



**STRESS APPLE**

CODE: STR-26



Polyurethane

Red/Green/Brown



**STRESS COW**

CODE: STR-27



Polyurethane

Black/White



**STRESS PIG**

CODE: STR-28



Polyurethane

Pink



**STRESS TURTLE**

CODE: STR-30



Polyurethane

Green/Black



**STRESS CONSTRUCTION CONE**

CODE: STR-31



Polyurethane

Orange/Black



**STRESS CAR**

CODE: STR-32



Polyurethane

White/Black/Gray, Yellow/Black/Gray



**STRESS TYRE**

CODE: STR-33



Polyurethane

Black/Silver



**AWARENESS RIBBON STRESS RELIEVER**

CODE: STR-34



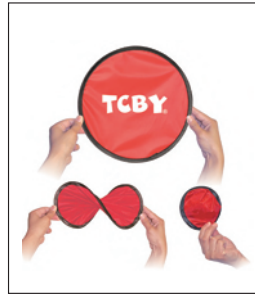
Polyurethane foam

Red, Pink



**FLIP FLYER FLYING DISK**

CODE: RT-02



Nylon

Blue, Red, White



**MONACO PLAYING CARDS**

CODE: RT-C03



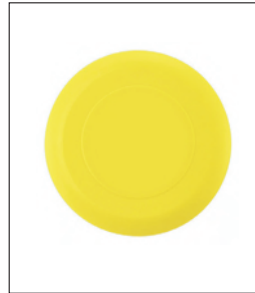
Plastic

Frosted Clear case



**SMALL FUN DISC**

CODE: RT-05



Plastic

White, Yellow, Blue, Red, Green



**FOLDABLE FRISBEE**

CODE: RT-06



Nylon

White, Red, Blue



**REFLECTIVE SAFETY SLAP BRACELET**

CODE: NI-W01



PU

Neon Orange, Neon Yellow, Neon Pink



**ROUND REFLECTIVE ZIPPER PULLS**

CODE: NI-02



Plastic

Neon Orange, Neon Yellow, Neon Pink



**DIAMOND REFLECTIVE ZIPPER PULL**

CODE: NI-03



Plastic

Neon Orange, Neon Yellow, Neon Pink





**CIRCLE STROBE LIGHT**

CODE: NI-S04



Plastic

Purple, Blue, Clear, Red, Yellow, Orange, Green



**QUICK TURN PAD PRINTED WRIST BAND**

CODE: NI-W05



Silicone

Black, White, Purple, Navy, Royal, Orange, Green, Yellow, Red, Pink, Maroon



**SILICONE SLAP BRACELET**

CODE: NI-W06



Silicone

Black, White, Yellow, Blue, Red, Orange, Purple, Pink, Green



**RIBBON MONEY BANK**

CODE: NI-07



Hard plastic

Frosted Clear, Frosted Yellow, Frosted Pink



**HAND CLAPPER**

CODE: NI-08



Hard plastic

White/Black, Blue/White, Red/White



**PIGGY BANK**

CODE: NI-09



PS (Polystyrene Plastic)

White



**STACK COIN BANK**

CODE: NI-11



PS (Polystyrene Plastic)

Red, Blue, Green



**COIN BANK PHONE HOLDER**

CODE: NI-12



PS (Polystyrene Plastic)

Red, Blue, White



SILICONE SLAP BRACELET

CODE: NI-W13



Silicone

Red, Blue, White, Green, Yellow



LASER WRISTBAND

CODE: WB-02



Silicone

White, Black, Green, Maroon, Navy, Pink, Purple, Red, Royal, Orange, Yellow



SMALL LASER WRISTBAND

CODE: WB-03



Silicone

White, Black, Green, Maroon, Navy, Pink, Purple, Red, Royal, Orange, Yellow



LASER WRISTBAND KEYRING

CODE: WB-04



Silicone

White, Black, Green, Maroon, Navy, Pink, Purple, Red, Royal, Orange, Yellow



SMALL LASER WRISTBAND KEYRING

CODE: WB-05



Silicone

White, Black, Green, Maroon, Navy, Pink, Purple, Red, Royal, Orange, Yellow



APPAREL HEADWEAR BAGS POUCHES TO  
DRINKWARE HOMEWARE OFFICE & BUSIN  
TOOLS OUTDOOR & TRAVEL HEALTHCARE T  
BLANKETS AWARDS & TROPHIES NOVELTY  
WRITING INSTRUMENT PERSONAL CARE T



New  Always!

Since 2003, the QUOZ brand has aspired to manufacture consistent value for money promotional products and apparel.

Inside this catalogue you will find approximately 1000 products, most of them are unique and innovative sourced from various countries around the world. Many of these items are only available exclusively from us in Australia and New Zealand.

With our fully owned subsidiary apparel factory in China and sourcing department for all our merchandise items, we have complete control over the quality and consistency that we provide. We currently have a large warehouse in Sydney from which we can dispatch stock quickly and accurately. We carry stock levels generous enough to cater for all order sizes. We offer decoration on all our items, both local stock and customised indent items.

We understand the value of relationships and focus on strengthening these with our dedicated distributors. We provide great value and quick turnarounds which we apply right across our range of products.

We have a dedicated team with a diverse range of talents that attribute to over 60 combined years in the industry.

We look forward to a future where everyone can enjoy the QUOZ brand...everday.

#### Disclaimer:

- © 2014 QUOZ – All rights are reserved by QUOZ.  
Due to the various product manufacturing processes, photographic and catalogue printing, all colours shown may vary slightly.
- All products, logos and trademarks are the property of their respective owners, which are in no way associated or affiliated with Quoz. Product names, logos and trademarks shown in this catalogue are intended to illustrate the basic product and the ability to include branding and artwork on them only and does not imply any co-operation or endorsement. They are never intended to suggest that the branding was designed by the companies producing these products or that the products with these specific artworks are readily available to any purchaser without the specific permission of the owners of the trademarked or copyrighted artworks or products.
- All products in this catalogue are subject to change without notice. For latest updates please visit our website – [www.quoz.com.au](http://www.quoz.com.au)

**QUOZ** | New  Always!

**quoz.com.au**

**appa** MEMBER

AUSTRALASIAN PROMOTIONAL  
PRODUCTS ASSOCIATION